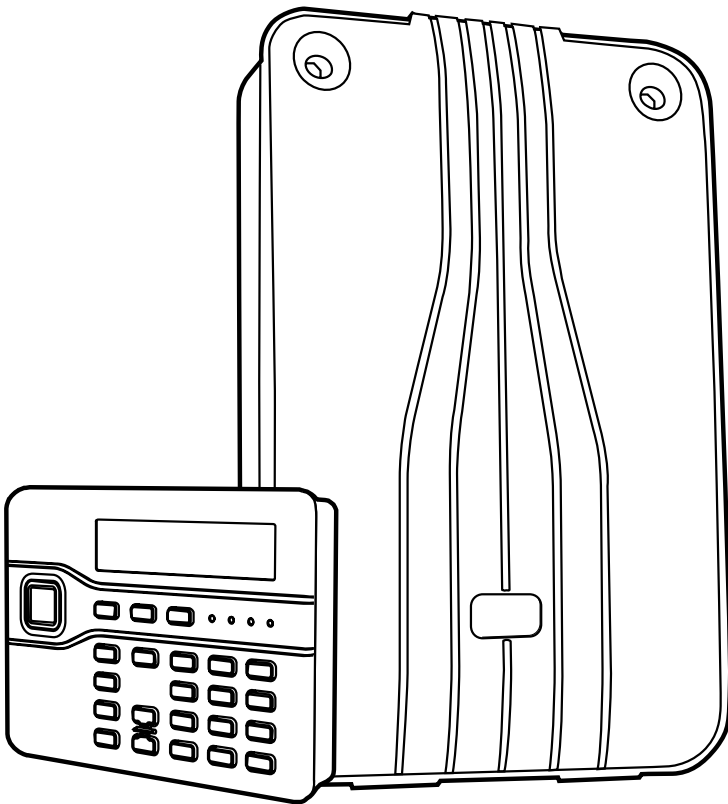


i-on 40

Security System Programming Reference



© Cooper Security Ltd. 2010

Every effort has been made to ensure that the contents of this book are correct. However, neither the authors nor Cooper Security Limited accept any liability for loss or damage caused or alleged to be caused directly or indirectly by this book. The contents of this book are subject to change without notice.

Printed and published in the U.K.

This manual applies to software used in the i-on40 control unit with version 2.02 software.

Contents

Introduction	1
About this Guide	1
System Overview	1
Part Setting or Partitioned System.....	1
Communications	2
Entering and Leaving Installer Menu	3
Entering the Installer Menu.....	3
Leaving the Installer Menu	4
Important! Saving Changes to the Installer Menu	5
Restoring Access Codes.....	5
Restoring Factory Defaults Only	6
Installer Mode Programming	7
Editing Text.....	7
Detectors/Devices	8
Detectors.....	8
Wired Keypads	18
Radio Keypads.....	21
External Sirens	23
Info Modules	25
WAMs.....	27
Outputs	29
Radio Outputs	29
Wired Outputs	31
Plug-By Outputs	33
Output Types	34
"Setting Options" and "Partitions" Menus	43
Part Setting or Partitioned System?	43
Options	44
Full Set Link.....	48
System Options	48
Wired Zone Type	48
User Access	49
User Reset	50
DD243 (UK Only).....	51
Profiles.....	53
Language.....	53
Restore Defaults	53
Installer Name.....	53
Installer Code.....	54
Keypad Text.....	54
Remote needs Entry	54
PA Response	54
Auto Rearm.....	55
Siren Delay	55
Siren Time	56
Entry Alarm Delay.....	56
Supervision.....	56
Jamming	57
Force Set.....	57
Tamper Omit.....	58
Anti-Code Reset.....	58
Silence Alerts	59

Mains Fail Delay	59
Communications.....	60
ARC Reporting.....	61
Speech Dialler.....	68
SMS.....	73
Line Fail Response	75
Line Fail Delay.....	76
IP Network (Own).....	76
Downloading	79
Testing	84
Test.....	84
Sirens and Sounders	84
Wired Keypad.....	86
Walk test.....	86
Zone Resistances.....	86
Signal Strengths.....	87
Outputs.....	88
Remotes.....	88
Panic Alarms	88
Prox Tags	89
ARC Reporting.....	89
Speech Dialler.....	89
PSU Current.....	90
View Log	90
About	91
Panel	91
Comms	91
Appendix I Installer Menu Defaults	95
Appendix II: ARC Communication Formats.....	98
Fast Format.....	98
Contact ID.....	98
SIA 1, SIA 2, SIA 3 and Extended SIA 3	99
Appendix III: Programming a Common Area.....	101
Installation and Programming	102
Zone Programming	102
Partition and Other Programming.....	103
User Programming	104
User Operation	104
To set:	104
To Unset:	104
Index.....	105

Introduction

About this Guide

This guide contains a detailed description of programming an i-on40 system using the Installer Menu. To install, connect and start up an i-on40 control unit please read *i-on40 Installation Guide*.

If you need to add or administer users (and their remote controls, PA buttons and prox tags) then you must enter the User Menu. This is described in detail in the *i-on40 Administrator's Guide*.

Note: Setting the time and date is also an administrative user function.

System Overview

The i-on40 is the control unit for a hybrid wired/wirefree alarm system intended for domestic and light commercial use. The control unit can support up to 40 zones, four wired keypads (i-kp01), four wireless keypads (i-rk01) and 16 outputs. For more details of the control unit's capacities, please refer to the i-on40 Installation Guide.

As an installer you can program the system in any of three separate ways:

- a) From the keypad.
- b) From a PC or laptop connected to the control unit via Ethernet cable, and using a standard web browser.
- c) From a PC or laptop connected to the control unit either over the public switched telephone network (PSTN) or via the USB port, and using Downloader software.

This manual describes programming the i-on40 from the keypad. However, the settings and options provided through the keypad are the same as those provided by b) and c) above.

Part Setting or Partitioned System

The i-on40 offers two basic ways of behaving as an alarm system:

Part Setting. In a Part Setting System the i-on40 can set in one of four ways: either Full set or three varieties of Part Set. In Full Set the control unit pays attention to all detectors. In each of the three Part Sets, the control unit ignores all detectors that do not have the appropriate Part Set attribute (see page 16).

Partitioned System. In a Partitioned system the i-on40 provides the equivalent of four, smaller, independent alarm systems. Each system is a "Partition" of the i-on40. You can allocate any set of zones to each Partition. Each zone can also belong to more than one Partition. Each Partition can have a Full Set level and one Part Set Level. During installation the installer can allocate keypads, sounders or outputs to any of the partitions.

Communications

The i-on40 provides a socket for an add-on communication module. To comply with EN50131 you must fit a module. The available modules are:

- i-sd-02 A speech dialler and public switched telephone network (PSTN) module that allows the control unit to send recorded speech messages and also report alarm information using standard protocols such as Fast Format and Contact ID. This module also allows remote maintenance over the PSTN.
- i-gsm02 A GSM module that allows speech messaging, alarm reporting and SMS text messaging over the mobile phone network.
- 8750 An Ethernet module that allows alarm reporting and remote maintenance over the internet.
- 8844 A GPRS module that allows internet protocol access over the mobile phone network.
- i-dig02 A PSTN module that allows the control unit to report alarm information using standard protocols such as Fast Format and Contact ID. This module also allows remote maintenance over the PSTN.

Entering and Leaving Installer Menu

Entering the Installer Menu

1. Make sure the system is unset and showing the standby screen (time and date).
2. Key in the Installer access code. When delivered from the factory the default Installer access code is "7890". The default user code is "1234".

```
i-on40  
12:00 23/07/2009
```

As you start to key in the code the display shows:

```
Enter Access Code:  
(* )
```

When you key in the last digit of the access code the display MAY show:

```
User Code Required  
( )
```

If this happens key in a valid user code (not a Set Only user code see note 1).

When you key in the last digit of the access code the display shows "Installer Menu" on the top line. The bottom line shows the first item in the Installer menu: Detectors/Devices. (See note 2.)

```
INSTALLER MENU  
Detectors/Devices >
```

3. Press ▲ or ▼ to display more options from the menu.

```
INSTALLER MENU  
Outputs >
```

Each option appears on the bottom line of the display in turn.

4. Press ► or ✓ to select that item of the menu.

```
OUTPUTS  
Edit Outputs >
```

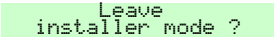
The option you selected now appears on the top line. If there are any sub-options for that selection, then the first of them

appears on the bottom line.
Press ▲ or ▼ to display the other sub-options.

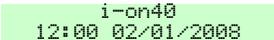
- Note: 1. After you initially gain access to the Installer Menu, you may leave and re-enter using the Installer access code by itself for up to 30 minutes after you last exited the Installer Menu. After that time you will need to enter a valid user access code to complete your entry into the Installer Menu (note that you cannot use a Set Only user code). To disable this feature see System Options – User Access – User Code Required on page 50.*
- 2. If you key in the code incorrectly, the display shows four "stars". Key in the code again. If you key in a total of ten incorrect codes (equivalent to 13 consecutive digits) then the system locks you out for 90 seconds.*

Leaving the Installer Menu

If you wish to leave the Installer Menu at any time.

1. Press ✕ until the display shows: 
2. Replace the control unit lid (if you removed it earlier). Ensure the control unit tamper switch is closed.
3. Press ✓. to leave Installer menu.
(Press ✕ if you do not want to leave the menu.)

The display shows the time and date. The system is ready for use.



- Note: If you attempt to leave the Installer Menu when there is fault, for example a detector-, control unit lid-, siren- or keypad tamper is active, or the battery is missing then the keypad displays a fault message telling you which device is causing the problem.*

Press **X** to return to the Installer Menu. You must rectify the fault (or delete the device from the system) before you can leave the Installer Menu.

Important!

Saving Changes to the Installer Menu

When you make changes to the Installer Menu the control unit holds those changes in temporary memory until you leave the Installer Menu. As you leave the Installer Menu the control unit writes those changes into a permanent store. If you remove all power BEFORE you leave the Installer Menu then the control unit will lose your changes. Note that this does not apply if you restore Factory Defaults, that change takes place immediately.

Restoring Access Codes

If the User and/or Installer codes are lost then:

1. If possible, enter the Installer menu.

Note: If you cannot enter Installer Menu then the control unit will start a tamper alarm when you open its lid.

2. Remove mains power, then open the control unit and disconnect the battery .

Note: This procedure will not work if the control unit lid tamper remains closed.

3. Identify the Reset Codes pins on the main PCB (see *i-on40 Installation Guide*).
4. Short the Reset pins together using a small screwdriver or jumper link. (Keep the short on until step 6.)
5. Apply mains power.

The control unit loads the factory default access codes:

User 1: 1234, Installer: 7890.

After a short pause the keypad display shows the time and date. The red LEDs glow to show an alert that the control unit lid is open.

The sounders operate.

6. Remove the short from the Reset pins.
7. Reconnect the battery.
8. Close the control unit lid (to restore the tamper switch).
9. Key in the Master User code 1234 to silence the sirens.
Press ✓ twice (if necessary) to acknowledge any alerts. To force the control unit to check the battery:
10. Enter installer menu and then leave it again.
The navigation key LEDs should now glow green.

Restoring Factory Defaults Only

If you wish to restore all factory default options, then:

1. From the Installer Menu select *System Options – Restore Defaults – Factory Defaults*.
The display asks for confirmation.
2. Press ✓ to load defaults.
(Press ✕ to go back to the Installer Menu without changing defaults.)
The display asks you to select Partition Mode or Part Set Mode.
3. Press A or B to select the desired mode.
The display asks you to select the zone wiring type.
4. Press ▲ or ▼ to display the desired wiring type on the bottom line of the display and then press ✓ to select it.
The system loads all defaults except for Access Codes and the Log (see Note).
The display shows "Factory defaults restored".
5. Leave the Installer Menu to save the change (press ✕ until the display shows "Leave Installer Menu ?" then press ✓).

Note: The log is protected and cannot be erased by the Installer or any user.

Installer Mode Programming

This section is a reference for all the options provided in the Installer Menu. Apart from "Naming Things/Editing Text" below all the section headings appear in the same order as the options appear in the Installer Menu on a keypad.

Editing Text

In the i-on40 zones, setting levels, partitions, keypads, outputs and users can all be named. Also, account numbers for Downloader can take letters as well as numbers. Whenever you have to edit the text for an item the steps are the same:

Each number on the keypad is associated with a range of letters in the same way as on many mobile phones. Figure 1 shows which letters appear on each key.

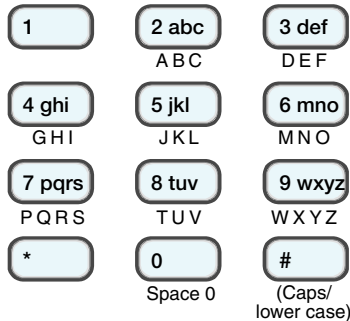


Figure 1. Letters Assigned to Keys

A cursor on the display shows where the next character will go when you key it in. If you are keying in capitals the cursor is a block, for small letters the cursor is an underline.

To change between capital and small letters press #.

When you first select a name to edit, the display shows the cursor at the beginning of the bottom line. If you press a number or letter key then the bottom line clears and the character you keyed-in appears at the beginning of the line. Alternatively, if you press ► when you first select a name to edit, then the existing text shifts right

one character and you can insert a new character in the empty space.

To move the cursor left or right press ▲ or ▼ respectively. To delete characters press ◀.

Note: If you wish to leave a name or text unchanged then press ✕. The display leaves the name change screen and restores the name to its previous value.

Press ✓ when you have finished entering text.

Detectors/Devices

Processing Priority

When several detectors are activated at the same time, the control unit always processes PA and Normal Alarm detectors first, followed by Fire, and then all other alarm types. The control unit always processes alarms before Alerts.

Detectors

Zone Numbering

The total number of zones available on the i-on40 depends on the wiring method you have selected for the hardwired zones in menu item *System Options – Wired Zone Type* on page 48 .

If you selected one of the Fully Supervised Loop (FSL) options then the i-on40 has 40 zones, numbered consecutively 1 to 40. Wired detectors occupy zone numbers 1 to 16 and radio detectors occupy zones 17 to 40.

If you selected 4-Wire Closed Circuit then the i-on40 has a total of 32 zones. Wired detectors occupy zones 1 to 8, while radio detectors occupy zones 17 to 40.

Note that radio detectors ALWAYS occupy zones 17 to 40.

Adding or Deleting Radio Detectors

To use a radio zone the control unit must learn the identity of the radio detector. To learn radio detectors select *Detectors/Devices - Detectors – Add/Delete Detectors*. The bottom line of the display shows the first of the radio detector zones: zone 17.

1. Use the ▲ or ▼ keys to highlight a free zone and press ► or ✓.

The display shows an "*" next to zones where the control unit has already learned detectors.

2. Activate the detector's tamper.

The keypad sounds a double "beep" when the control unit successfully learns the detector. The display shows a message to confirm that you have learned the detector to the selected zone, together with the current signal strength of the transmitter.

3. Either:

Press ✕ to go back to the list of zones so that you can go on and learn other detectors.

OR:

Press ► or ✓ to carry on giving a name, type and attribute to the detector you have just learned (see page 11).

Delete All

If you wish to remove all the radio detectors from a control unit then select *Detectors/Devices - Detectors - Add/Delete Detectors - Delete All*. Note that you cannot undo this option. The control unit sets all radio zones to Not Used, and erases the identities of all the radio transmitters that it has learned. (Hint: when you see Zone 17 on the bottom line of the display press ▲.)

Deleting a Single Detector

To delete an individual detector select *Detectors/Devices - Detectors - Add/Delete Detectors* from the Installer Menu. The bottom line of the display shows the first of the radio detector zones: Zone 17.

1. Use the ▲ or ▼ keys to highlight a zone you wish to delete (the display shows an "*" next to zones that have detectors) and press ►.
2. You have the choice of deleting the detector ID or of defaulting the zone. Press ▲ or ▼ to see each of these choices.

If you select "Delete Detector ID" then the control unit "forgets" the ID of the detector, but leaves any zone programming in place.

If you select "Default zone" then the control unit "forgets" the ID of the detector and sets all the zone programming back to default values: Type = Not Used, no attributes.

3. Press ✓ to confirm your choice.

To reinstate the detector you must teach the control unit that detector's identity again.

Edit Zones

You can program each zone's behaviour at any time, whether or not a wired detector is connected, or the control unit has learned the identity of a radio detector.

Note: If a wired zone does not have a detector connected to it then make sure that you set the zone type to "Not Used". When delivered from the factory the control unit has all zones set to "Not Used" (unless you load a Profile during initial start-up).

Name, Type, Attributes, Partitions

To change the name associated with a zone, its type, attributes or partitions then select *Detectors/Devices - Detectors - Edit Zones*. The bottom line of the display starts at zone 1.

1. Press ▲ or ▼ to show the other zones.

(Hint: You can key in the zone number you wish to edit, for example:"05" to see zone 05, "02" to see zone 02, "30" to see zone 30 or "40" to see zone 40.)

2. When you have found the zone you wish to edit press ► or ✓.

The bottom line of the display shows "Name".

3. Press ▲ or ▼ to see the Type, Attributes or Partition options for that zone. Press ► or ✓ to select the option you wish to change.

Note: If you selected "Part set mode" during Initial Power-up then the display will not show the Partitions option (see System Options–Restore Defaults–Factory Defaults on page 53 if you want to change the system from Part Setting to Partitions). If a zone has the type "Not Used" then the Attributes and Partition options do not appear.

4. Press ✓ to confirm and store any changes.

Changing Zone Names

For hints on editing zone names see page 7.

Zone Types

When the control unit first learns a detector the zone type defaults to Normal Alarm. The bottom line of the display shows a "*" at the beginning to show the zone's current type.

(Hint: You can select a zone type quickly by keying the number shown in brackets after the type's name, for example: "05" to select Final Exit, "02" to select Fire Alarm, "11" to select External PSU A/C Fail. The number does not appear on the keypad display.)

The zone types available are:

Not Used (00)

The alarm system will not respond when an event triggers this detector.

Panic Alarm (01).

Operating a device programmed as 'Panic Alarm' (PA) will start an audible alarm. If a communications module is fitted there may also be an alarm transmission to the Alarm Receiving Centre (ARC), depending on how you have programmed the ARC

Reporting option (see page 61). PA alarms operate whether the system is set or unset.

Fire Alarm (02).

Smoke or heat detectors connected to Fire Alarm zones cause the sirens to give a pulsing fire signal. Fire alarms operate whether the system is set or unset, and will always trigger communications, if a communications module is fitted and enabled.

Normal Alarm (03).

A zone programmed as 'Normal Alarm' will start an alarm when the system is set.

24 Hour Alarm (04).

Activating this zone causes an internal alarm (keypads and speakers) whether the system is set or unset.

Final Exit (05).

Zones of this type must be the last detector to be activated on exit, or the first to be activated on entry. You can use zones of this type to finally set the system, or to start the entry procedure. See page 45 to set the exit mode type.

Note: If you give a Final Exit zone any of the Part Set attributes then you can program that zone to behave like a Normal Alarm zone if the user part sets the system. See page 47 .

Entry Route (06).

Use this zone type for detectors sited between the Final Exit door/detector and the keypad. If an 'Entry Route' zone is triggered when the system is set, an alarm will occur. If the entry/exit timer is running when an Entry Route zone is triggered then no alarm occurs until the entry/exit timer expires.

Note: If you give an Entry Route zone one of the Part Set attributes then you can program that zone to behave like a Final Exit zone if the user part sets the system. See page 47 .

Technical Alarm (07).

Use this zone type when you want to monitor equipment, for example a freezer, without raising a

full alarm. If a technical alarm zone is activated (and the control unit correctly programmed, see page 60) then the control unit starts communication and logs the event.

If the technical alarm occurs while the system is set, then system makes no audible alarm. When a user unsets the system the keypad shows an alert.

If a technical alarm zone is activated while the system is unset then the system starts an alert immediately and gives a brief tone from the keypad every few seconds. When a user enters a valid access code the keypad stops the tone and displays the zone causing the alarm.

When the user acknowledges the alert by pressing ✓ the control unit resets the technical alarm ready for the next event.

Key Switch Momentary (08).

Use this zone type to connect a momentary keyswitch to a single zone.

In a Part Setting system the keyswitch can Full Set or unset.

In a Partitioned system you can allocate the keyswitch to one or more partitions.

Each time a user operates the keyswitch the control unit changes the current set state.

Key Switch Latched (09).

Use this zone type to connect a fixed position keyswitch to a single zone.

In a Part Setting system the keyswitch can Full Set or unset. As with Momentary keyswitches, you can allocate the zone to one or more Partitions (see above).

When the user closes the keyswitch contacts the control unit sets the allocated Partition. When the user opens the contacts the control unit unsets the allocated Partition.

Notes:

1. *The keyswitch zone types are intended for use on zones that connect to an access control keypad, electronic key or other type of hardwired device used*

to set or unset the system.

2. When the user operates the keyswitch while the system is unset then the control unit starts the programmed exit mode.

3. When the user operates the keyswitch while the system is set then the control unit unsets the system immediately.

4. The user cannot reset the system from a Keyswitch zone.

5. Do not assign more than one Latched Key Switch zone to a partition.

Tamper (10)

Use this zone type to monitor the tamper status of external equipment. The control unit monitors a Tamper zone at all times. When triggered in the unset condition, only internal sounders operate. When triggered in the set condition, the alarm response determines whether external sounders, strobe and communications also respond to the alarm.

External PSU A/C Fail (11)

Use this zone type to monitor the A/C Fail output of an external power supply unit. If a power supply unit triggers a zone with this type then the control unit waits for a random time between 52 and 59 minutes before activating any output programmed as "AC Fail" and causes an alert that displays "External mains fail" on the keypad.

If the alarm system is set then the control unit logs the event, starts any programmed communication, but does not start an alarm.

External PSU Battery Fault (12)

Use this zone type to monitor the Battery Fault output of an external power supply unit. If an external PSU triggers a zone with this type then the control unit activates any output programmed as "Battery Fault" and causes an alert that displays "External Battery Fault" on the keypad.

If the alarm system is set then the control unit logs the event, starts any programmed communication, but does not start an alarm.

External PSU Low Volts (13).

Use this zone type to monitor the Low Voltage output of an external power supply unit. If a power supply triggers a zone with this type then the control unit activates any output programmed as "Low Volts" and causes an alert that displays "External Low Volts" on the keypad.

If the alarm system is set then the control unit logs the event, starts any programmed communication, but does not start an alarm.

External PSU Fault (14).

Use this zone type to monitor the fault output of an external PSU. If a power supply triggers a zone with this type then the control unit activates any output programmed as "External PSU Fault" and causes an alert that displays "External power fault" on the keypad.

If the alarm system is set then the control unit logs the event, starts any programmed communication, but does not start an alarm.

Partitions

In a partitioned system you can assign zones to any of the four partitions. Any zone can belong to one or more partitions.

Note: If you assign a zone to more than one partition then that zone will only be set when all the partitions it belongs to are set.

To assign zones to a partition:

1. Select *Detectors/Devices – Detectors – Edit Zones – Zone (1-40) - Partitions.*

Note: If this menu does not appear check that you are using a Part Setting system. To change to a Partitioned system see System Options – Restore Defaults – Factory Defaults on page 53

2. Scroll through the list of partitions for that zone. Press the ► or ◀ keys to change the status of the zone. "Yes" means the zone is allocated to that partition.
3. Press ✓ to save your changes and return to the list of zones.

When delivered from the factory, or if you restore the control unit to factory settings, then all zones belong to partition 1.

Zone Attributes

Note: This menu does not appear if a zone has the type "Not Used".

You can assign more than one attribute to a zone. Some attributes are not available for certain zone types. The display shows the only available attributes for the zone type you select.

To enable an attribute for a zone press ► or ◀ until the bottom line of the display shows a "Yes".

Chime

When enabled by the user, the system gives a non-alarm warning tone when any zones programmed as 'Chime' are opened. This facility operates only while the system is unset.

Soak Test

Use this zone attribute if you want to place under long term test a detector that you suspect is giving false alarms. Zones with this attribute are disabled for 14 days after you return the control unit to user/unset mode. If the zone remains inactive for the whole fourteen days then after midnight on the 14th day the control unit returns the zone to normal use. If the zone is activated during those 14 days while the system is set then the control unit logs the event as a "Soak Test Fail Zn" (n is the zone number) without sounding any sirens or starting communications. The control unit also lights the red LEDs around the navigation key on the keypad to alert the user.

You can apply the soak test attribute to Normal

Alarm, Entry Route and Tamper zone types.
During setting the keypad displays a brief message to inform the user that one or more zones are in soak test.

Double Knock

Zones programmed with this attribute will cause an alarm only if the zone is EITHER triggered, restored and triggered again within a five minute period, OR if the zone remains active for 10 seconds.

You can apply the Double Knock attribute to the Normal Alarm and Entry Route zone types.

Part Set B

(Not visible in a partitioned system.) When a user presses button B (part set), the control unit sets only those zones where the Part Set B attribute = "Yes". (See also "Part Set Exit Mode" on page 45).

Part Set C

(Not visible in a partitioned system.) When a user presses button C the control unit sets only those zones where Part Set C attribute = "Yes".

Part Set D

(Not visible in a partitioned system.) When a user presses button D the control unit sets only those zones where Part Set D attribute = "Yes".

Part Set

(Not visible in a Part Setting system.) When a partition is Part Set, zones in that partition with this attribute are set. Note that if a zone is in more than one partition, all partitions have to be set or part set before this zone will be set.

Omittable

This attribute applies to the following zone types only: Normal Alarm, 24hr, Technical, Entry Route, Tamper, External PSU A/C Fail, External PSU Battery Fault, External PSU Low Volts and External PSU Fault.

A) When a zone has this attribute, a user can omit it before setting the system.

B) If a user tries to set the system when a zone with this attribute is open (active) the control unit alerts

them and pauses the setting procedure. The user can acknowledge the alert by pressing ✓ and continue setting. You must enable this feature in the *System Options – User Access – Quick Omit* menu, see page 50.

Force Set Omit

When this attribute is set to Yes a user with a remote control can set the system while the zone is open (active). (You must enable this feature in the *System Options – Force Set* menu. See page 57.)

Wired Keypads

The i-on40 allows you to give each wired keypad a name, and assign a keypad to one or more partitions.

The control unit displays the name you give to the keypad when it is reporting faults or other events, making it easier to locate the affected device.

Naming a Wired Keypad

To name a wired keypad:

1. Select *Detectors/Devices – Wired Keypads*.

The bottom line of the display shows the first in a list of the wired keypads. If a keypad is connected to the system then the bottom line of the display shows a "*" at the beginning of the line.

2. Press ▲ or ▼ to select the keypad that you wish to name. Then press ►.

The bottom line of the display shows "Name".

3. Press ►.

The top line of the display shows the selected keypad and the bottom line shows the current name of the keypad with a text entry cursor at the beginning of the line.

4. Key in the name of the wired keypad.

See page 7 for hints on how to edit names.

5. Press ✓ to save the text.

Assigning keypads to Partitions

The i-on40 allows you to assign keypads to any of the partitions.

Once you have assigned a keypad to a partition then that keypad will display messages and give tones for the assigned partition(s).

However, any user can use any keypad. While they are using a keypad the display shows information from partitions assigned to the user, not to the keypad.

To assign a keypad to a partition:

1. Select *Detectors/Devices – Wired Keypad*.

The bottom line of the display shows the first in a list of the wired keypads. If a keypad is connected to the system then the bottom line of the display shows a "*" at the beginning of the line.

2. Press ▲ or ▼ to select the keypad you wish to assign to a partition, then press ►.

The bottom line shows "Name".

3. Press ▼ until the bottom line of the display shows "Partitions", then press ►.

The bottom line shows the first partition. At the end of the bottom line the display shows "Yes" if the keypad is assigned to the partition, "No" if it is not assigned to the partition.

4. Press ◀ or ▶ to toggle the "Yes" to a "No" or the "No" to a "Yes".

5. Press ▲ or ▼ to scroll to the next partition.

6. Press ✓ to save your changes when you have finished.

Programming Quick Set Keys

Note: If you enable the quick set keys the control unit no longer complies with EN50131. See page 49.

In a partitioned system the installer can program the A, B, C and D keys to full set or part set individual partitions. Each keypad can have a different arrangement of quick set keys. For example the A key on keypad 1

might part set partitions 1 and 2, but on keypad 2 it could be programmed to full set partition 3.

In addition, each of the A, B, C or D keys can have a name. The keypad displays this name while the system is setting after the user presses that key.

To name and assign the action of a quick set key:

1. Select *Detectors/Devices - Wired Keypads*.

The bottom line of the display shows the first in a list of the wired keypads.

2. Press ▲ or ▼ followed by ► to select the keypad you wish to program.

The bottom line of the display shows "Name".

3. Press ▲ or ▼ until the bottom line of the display shows the key you wish to program, then press ►.

The top line of the display shows the keypad number and the key that you are programming. The bottom line of the display shows "Name".

4. Press ► if you wish to give a name to the quick set key.

The name you key-in will appear on the display when the user presses the quick set key. (For hints on editing names see page 7).

Press ✓ when you have finished keying-in the name.

5. Press ▲ or ▼ until the bottom line of the display shows "Setting" and then press ►.

The bottom line of the display shows "*Set".

6. Press ✓.

The bottom line of the display shows the first item in a list of the partitions. The right hand end of the bottom line shows the setting state that you want the key to produce for that partition.

7. Press ◀ or ▶ change the setting state. The options are: Full Set, Part Set, or None (no action).

8. Press ▲ or ▼ to scroll through the list of partitions.

9. Repeat steps 2 and 3 to set the action for all the partitions.
10. Press ✓ to save the listed actions for that key.

Radio Keypads

The Radio Keypad is a transmitter that users can employ to set and unset the system remotely. The Radio Keypad is a transmitter only, and does not display any system information. The LEDs on the Radio Keypad glow to show that it is transmitting a signal.

When installing a Radio Keypad you must first teach the control unit the Radio Keypad's identity, and then program the control unit with the function of each of the Radio Keypad's A, B, C or D buttons. In addition, you can give each Radio Keypad a name, and assign it to individual partitions, just as you can for the wired keypads.

Adding a Radio Keypad

To make the control unit learn a Radio Keypad's identity.

1. Select *Detectors/Devices – Radio Keypad – ADD/DEL Radio Keypad*.

The bottom line of the display shows "Radio Keypad 1". This is the first in a list of four available memory slots for Radio Keypads, each of which can be used to learn the identity of an individual Radio Keypad.

If a memory slot is already occupied then the beginning of the line shows a "*".

2. Press ▲ or ▼ to scroll to the memory slot that you wish to use. Then press ►.

The display asks you to activate the tamper switch on the Radio Keypad.

3. Activate the Radio Keypad tamper.

The Radio Keypad signals its identity to the i-on40 control unit. When the control unit learns the Radio Keypad's identity it gives a double beep.

Deleting an Radio Keypad

To remove a Radio Keypad from the system:

1. Select *Detectors/Devices – Radio Keypad – ADD/DEL Radio Keypad*.

The bottom line of the display shows "Radio Keypad 1". This is the first in a list of four available memory slots for Radio Keypads. If a memory slot is occupied then the beginning of the line shows a "*" icon.

2. Press ▲ or ▼ to scroll to the Radio Keypad that you wish to delete. Then press ✓.

The display asks you to confirm that you wish to delete the selected Radio Keypad.

3. Press ✓.

The control unit deletes the Radio Keypad's identity and gives a double beep.

Naming a Radio Keypad

1. Select *Detectors/Devices – Radio Keypad*.

The display shows a list of "memory slots" for the radio keypads. If a memory slot is occupied by a radio keypad then the bottom line of the display shows a "*" at the beginning of the line.

2. Select the keypad that you wish to name.

The bottom line of the display shows "Name".

3. Press ►.

The top line of the display shows "Name" and the bottom line shows the current name of the keypad with a text entry cursor at the beginning of the line.

4. Key in the name of the radio keypad.

For hints on editing names see page 7 .

4. Press ✓ to save the text.

Assigning a Radio Keypad to Partitions

The i-on40 allows you to assign radio keypads to one or more of the partitions:

1. Select *Detectors/Devices – Radio Keypad*.

The bottom line of the display shows the first in a list of "memory slots" for the radio keypads. If a memory slot is occupied by a radio keypad then the bottom line of the display shows a "*" at the beginning of the line.

2. Press ▲ or ▼ to select the radio keypad you wish to assign to a partition, then press ►.

The bottom line shows the first partition. At the end of the bottom line the display shows "Yes" if the keypad is assigned to the partition, "No" if it is not assigned to the partition.

3. Press ◀ or ▶ to change the status of the keypad. "Yes" means the keypad is assigned to the partition.
4. Repeat steps 2 and 3 for all the other partitions you wish to assign the radio keypad to.
5. Press ✓ to save your changes when you have finished.

Once you have assigned a keypad to a partition then that radio keypad can set and unset the assigned partition(s).

External Sirens

The 760ES external radio siren is a weather-proof battery powered siren designed to operate on external walls. In an alarm the control unit triggers the external siren at the same time as the internal siren. The 760ES external siren runs for either: five seconds, three minutes, or 15 minutes depending on the position of a link within the sounder.

Each control unit can learn up to four external radio sirens.

To program the external siren select *Detectors/Devices – External Siren*.

Adding an External Siren

(Please read the installation guide for the external siren.)
To make the control unit learn the ID of an external siren:

1. Select *Detectors/Devices – External Siren – Add/Del Ext Siren*.

The display shows four possible “memory slots” for external sirens. A slot already allocated to a siren shows a “*” at the beginning of its line.

2. Select an empty memory slot.

The display shows a message asking you to operate the siren’s tamper.

3. Operate the siren’s tamper.

The control unit learns the siren’s identity and gives a double beep.

Allocating Sirens To Partitions

Note: By default all sirens are assigned to all partitions.

To allocate a siren to a partition:

1. Select *Detectors/Devices – External Siren – Partitions*.

Note: This menu does not appear if you are using a Part Setting system. To change to a Partitioned system see System Options – Restore Defaults – Factory Defaults on page 53 .

The bottom line of the display shows the first of the four possible sirens.

2. Select the siren you wish to allocate.

The bottom line of the display shows the first partition.

3. Scroll through the list of partitions for that siren. Use the ► or ◀ keys to change the status of the siren.

“Yes” means the siren is allocated to that partition.

4. Press ✓ to save your changes and return to the list of sirens.

Deleting an External Siren

To remove an external siren from the system:

1. Select *Detectors/Devices – External Siren – Add/Del Ext Siren*.

The display shows four possible “memory slots” for external sirens. A slot already allocated to a siren shows a “*” at the beginning of its line.

2. Select the siren you want to delete.

The display shows the message “Delete Ext Siren”.

3. Press ✓ to make the control unit “forget” the siren ID learned into that memory slot.

The control unit deletes the siren’s identity, removes the “*” from the beginning of the line, and gives a double beep.

Info Modules

The 771r Info Module is an external display module that can show the setting state of the system or one or more partitions. You must teach the identity of the i-on40 control unit to each Info Module that you wish to use.

If you wish to allocate an Info Module to individual partitions then you must fit the appropriate jumpers within the Info Module (see the 771r Installation Guide supplied with the Info Module).

Adding an Info Module

To add an Info Module:

1. Select *Detectors/Devices – Info Module* .
2. Make sure the Info Module is in Learn Mode (consult the 771r Installation Guide).

3. Select *Teach Info Module*.

The display shows the message “Is the receiver is in learn mode?”.

4. Press ✓ on the i-on40 keypad.

The Info Module should beep twice to confirm that it has learned the identity of the control unit.

The keypad display shows “Did the receiver beep twice?”.

5. Press ✓ on the i-on40 keypad to confirm that the Info Module has learned the identity of the i-on40.

Disabling Info Modules

If you physically remove the Info Modules from a system (for example, when a user no longer requires them) then you may wish to stop the control unit trying to update the Info Module's display. The *Detectors/Devices-Info Module* menu provides the *Updates* option for this purpose.

To disable updates on an Info Module:

1. Select *Detectors/Devices – Info Module - Updates*.

The bottom line of the display shows either "Disabled" or "Enabled". (A "*" at the beginning of the line shows the option currently in use.

2. Press ▲ or ▼ to select the option you require.

When you select Enabled, the control unit carries on transmitting to the Info Module.

When you select Disabled, the control unit stops transmitting data to all the Info Modules.

3. Press ✓ to confirm the change.

The default setting for this menu option is Disabled. The control unit changes the setting to Enabled when you teach an Info Module the control unit's identity.

Enabling the Ready to Set LED

The Info Module possesses a LED that glows when the alarm system is NOT ready to set (for example, because a detector is reporting an alarm). To disable or enable this LED:

1. Select *Detectors/Devices – Info Module - Ready-to-Set LED*.

The bottom line of the display shows either "Disabled" or "Enabled". (A "*" at the beginning of the line shows the option currently in use.

2. Press ▲ or ▼ to select the option you require.

When you select Enabled, the control unit carries on using the Ready to Set LED on the Info Module.

When you select Disabled, the control unit stops using the Ready to Set LED the Info Module.

3. Press ✓ to confirm the change.

WAMs

The i-on40 can operate up to two 770r WAM modules. Although the WAM provides five different modes, when working with an i-on40 only three of them are relevant. The installer selects the mode when commissioning the WAM hardware. The modes provide the following functions for the i-on40 control unit:

Mode 1 Repeater Module. The WAM repeats the signals from any detectors within its range, amplifying them to a level that the i-on40 control unit can detect. This allows you to increase the area covered by detectors.

Mode 2 Output Module. The WAM accepts commands from the i-on40 control unit to operate wired outputs. (The WAM can also accept commands from other i-on or Homelink transmitters.) Each WAM output corresponds to one of the radio outputs on the i-on40 as follows:

WAM NO:	OUTPUTS	
	WAM OP No.	Panel OP No.
1	1	1
	2	2
	3	3
	4	4
2	1	5
	2	6
	3	7
	4	8

Table 1. WAM OPs to i-on40 radio OPs

Mode 4 Sounder Module. The WAM operates as a radio link to allow you to remotely connect a standard wired siren to the i-on40 control unit. In this mode the WAM also provides inputs so that the wired siren can report back tampers, low battery or other trouble conditions.

Adding a WAM

To ensure correct operation you must *first* select the desired mode on the WAM (see the WAM Installation Guide) and then teach the WAM's identity to the i-on40 control unit.

To teach the control unit the WAM's identity:

1. Select *Detectors/Devices – WAM – Add/Del WAM*.

The bottom line of the display shows the first of two available "memory slots" for learning WAM modules. Each memory slot can hold the identity of a single WAM module. When a slot is occupied with a WAM then the bottom line shows a "*" at the beginning.

2. Press ▲ or ▼ to select the memory slot that you wish to use, followed by ✓.

The display asks you to activate the tamper switch on the WAM.

3. Activate the WAM tamper.

The WAM signals its identity to the i-on40 control unit. When the control unit learns the WAM's identity the keypad gives a double beep.

Viewing a WAM

To check the functions of the WAMs currently learned by the control unit:

1. Select *Detectors/Devices – WAM – View WAM*.

The bottom line of the display shows the first in a list of the available WAM memory slots. When a slot is occupied with a WAM then the bottom line shows a "*" at the beginning.

2. Press ▲ or ▼ to select the WAM whose function you wish to view.

The bottom line of the display shows one of the following:

- Repeater Module.
- Output Module.
- Sounder Module.
- Not Used.

Deleting a WAM

To remove a WAM from service in the system, then:

1. Select *Detectors/Devices – WAM – Add/Del WAM*.
The bottom line of the display shows the first in a list of the available WAMs.
2. Press ▲ or ▼ to select the WAM you wish to delete then press ✓. (When a slot is occupied with a WAM then the bottom line shows a "*" at the beginning.)
The display asks you to confirm your choice.
3. Press ✓.
The control unit deletes the WAM's identity from the selected memory slot.

Outputs

The i-on40 control unit provides three different sets of outputs:

8 radio outputs. To use these outputs you must install a radio receiver, for example a WAM, 762 or 768.

4 hardwired outputs.

12 plug-by outputs.

(See *i-on40 Installation Guide* for the position of connectors.)

All three sets of outputs can be programmed as any of the output types listed on page 34.

Radio Outputs

To use a radio output on a WAM see page 27 .

To use a radio output on a 762r, 768r or 769r receiver you must teach the identity of the i-on40 control unit to the receiver.

Note: If you are teaching 762r, 768r, or 769r receivers then make sure that you disable IR learn on the receivers first.

Adding Radio Outputs

To teach the control unit's identity to a 762r, 768r or 769r:

1. Select *Outputs – Radio Outputs – Add Outputs*.
The bottom line of the display shows the first in the list of eight available radio outputs.
2. Press ▲ or ▼ to select the radio output that you wish to make the receiver learn and press ✓.
The keypad displays a reminder: "Is the receiver in learn mode?"
3. Make sure the receiver is powered up.
Follow the programming instructions for the receiver to make it learn the control unit into the desired channel.
4. At the control unit keypad, press ✓.
The control unit starts broadcasting its own identity to the receiver.
The control unit keypad displays the message: "Did the receiver beep twice?".
The receiver should beep twice to indicate that it has learned the identity of the control unit.
4. Press ✓ to stop the control unit broadcasting its identity.

Editing Radio Outputs

Once a receiver has learned an output from the control unit you must set up the output behaviour at the control unit by giving the output a type. You can also give each output a text name.

To give a radio output a name:

1. Select *Outputs – Radio Outputs – Edit Outputs*.
The bottom line of the display shows the first in the list of eight available radio outputs.
 2. Press ▲ or ▼ to select the radio output that you wish to name and press ►.
- (Hint: You can key in the output number you wish to edit, for example:"05" to see output 05.)
- The bottom line of the display shows the word "Name".

3. Press ► to give the output a name.
See page 7 for hints on editing names.
Press ✓ when you have finished editing the name.

To give a radio output a type:

1. Select *Outputs – Radio Outputs – Edit Outputs*.
The bottom line of the display shows the first of eight available radio outputs.
2. Press ▲ or ▼ to select the radio output that you wish to give a type and press ✓.
The bottom line of the display shows the word "Name".
3. Press ▼ and then ✓ to see the list of types.
You can select any of the types listed on page 34 onwards.
Press ✓ to store any changes to the type.

Note: Partitioned Systems

If you are programming a partitioned system then at this point, for some output types, the top line of the display shows "Partition?". The bottom line of the display shows "Partition 1 Yes". This means that the system is asking if you want to allocate the output to Partition 1.

You can remove the output from Partition 1 by pressing ◀ or ▶ to change the "Yes" to a "No".

Press ▲ or ▼ to scroll to other Partitions. Press ◀ or ▶ to assign the output to each Partition as required.

Press ✓ when you have finished assigning outputs to Partitions.

4. Press ▼ to scroll down to the next output.

Wired Outputs

To use the control unit's wired outputs you must program their behaviour by giving them an output type. You can also give each wired output a name.

The i-on40 also lets you change the polarity of the wired output, to suit the type of equipment that the output must work with.

To give a wired output a name:

1. Select *Outputs – Wired Outputs*.

The bottom line of the display shows the first in the list of four available wired outputs.

2. Press ▲ or ▼ to select the wired output that you wish to name and press ►.

The bottom line of the display shows the word "Name".

3. Press ► to give the output a name.

See page 7 for hints on editing names.

Press ✓ when you have finished editing the name.

To give a wired output a type:

1. Select *Outputs – Wired Outputs*.

The bottom line of the display shows the first in the list of four available wired outputs.

2. Press ▲ or ▼ to select the wired output that you wish to give a type and press ►.

The bottom line of the display shows the word "Name".

3. Press ▼ and then ► to see the list of types.

You can select any of the types listed on page 34 onwards.

Press ✓ to store any changes to the type.

Note: Partitioned Systems

If you are programming a partitioned system then at this point, for some output types, the top line of the display shows "Partition?". The bottom line of the display shows "Partition 1 Yes". This means that the system is asking if you want to allocate the output to Partition 1.

You can remove the output from Partition 1 by pressing ◀ or ▶ to change the "Yes" to a "No".

Press ▲ or ▼ to scroll to other Partitions. Press ◀ or ▶ to assign the output to each Partition as required.

Press ✓ when you have finished assigning outputs to Partitions.

4. Press ▼ to scroll down to the next output.

Polarity

This option allows you to change the polarity of the wired outputs. There are two options:

Normal

The output is held at +12V while inactive, and at 0V when activated.

Inverted

The output is held at 0V while inactive, and at +12V when activated.

To change the polarity of a wired output:

1. Select *Outputs – Wired Outputs*.

The bottom line of the display shows the first in the list of four available wired outputs.

2. Press ▲ or ▼ to select the wired output that you wish to change and press ▶.

The bottom line of the display shows the word "Name".

3. Press ▼ until the bottom line shows "Polarity", and then press ▶.

The bottom line of the display shows the current polarity.

4. Press ▶ or ◀ to change the polarity.
5. Press ✓ to store any changes to the polarity.

Plug-By Outputs

The plug-by outputs are designed for use by standalone communicators (see *i-on40 Installation Guide* for connection details). You can give each output a name, a

type, and change its polarity. Programming plug-by outputs is the same as programming wired outputs, but you must use the *Outputs – Plug-by Outputs* menu.

Note: The activity of the plug-by outputs is affected by the alarm response you select. For example, if you select the alarm response "Siren" for Part Set B, then the control units will not trigger the Plug-by-Outputs if there is an alarm when the system is in part set B. To make the plug-by outputs operate you must select an alarm response that has communications.

Output Types

(Hint: You can select an output type quickly by keying the number shown in brackets after the type's name, for example:"04" to select Open/Close, "02" to select Panic Alarm, "19" to select General Fault. The number does not appear on the keypad display.)

The output types available are:

Type:	Active when:	Assign to Partitions?
Not Used (00)	(Never)	
Fire Alarm (01)	The control unit starts a fire alarm.	Yes
Panic Alarm (02)	The control unit starts a panic alarm.	Yes
Burglar Alarm (03)	Any of the following zones are triggered: Normal Alarm Tamper (in a set system) Entry Route Tamper Zone (in a set system) Entry time expires 24 hour (in a set system)	Yes

Type:	Active when:	Assign to Partitions?
Open/Close (04)	The system is unset. Inactive when the system is set.	Yes
Alarm Abort (05)	An alarm in the selected partition has been aborted by the user within the 90s abort period. Deactivates when the alarm is reset.	Yes
Technical Alarm (06)	There is a technical alarm.	Yes
Confirmed Alarm (07)	There is a confirmed alarm. Deactivates when the system is reset.	Yes
RF Low Battery (08)	A wirefree detector reports a low battery. The output remains active until all detectors stop reporting low batteries.	Yes
RF Supervision (09)	There is a supervision failure on any radio zone. The output remains active until all supervision failures are reset.	Yes
RF Jamming (10)	The control unit detects jamming. The output remains on until all jamming disappears.	No
RF Fault (11)	There are any of the following faults: RF Low Battery, RF supervision, RF jamming.	Yes

Type:	Active when:	Assign to Partitions?
Panel A/C Fail (12)	<p>Either Mains power is absent for between 52 and 59 minutes, OR a zone of type "External PSU A/C Fail" has been triggered. The control unit deactivates the output if a user keys in a valid access code after mains power has been restored.</p> <p><i>Note: If the External PSU A/C Fail zone is activated while the control unit is still receiving mains power then the control unit will activate this output within a few seconds.</i></p> <p><i>If the control unit is not receiving mains power then it assumes that there is a general power cut and waits for 52 to 59 minutes.</i></p>	No

Type:	Active when:	Assign to Partitions?
Panel Battery Fault (13)	<p>The control unit detects a fault with its backup battery, OR a zone of type "External PSU Battery Fault" has been triggered. If the alert was caused by an "External PSU Battery Fault" zone then the control unit deactivates the output when the zone has been restored and a user has acknowledges the fault by entering a valid access code.</p> <p>If the alert was caused by a fault with the control unit's backup battery then the control unit deactivates the output when it detects a good battery and a user acknowledges the alert.</p> <p><i>Note: To cause the control unit to check its backup battery enter and leave the Installer Menu.</i></p>	No
External PSU Low Volts (14)	<p>An external power supply has triggered an External PSU Low Volts zone.</p> <p>The control unit deactivates the output when the zone has been restored and a user has acknowledges the fault by entering a valid access code.</p>	No

Type:	Active when:	Assign to Partitions?
External PSU Fault (15)	An external power supply fault signal triggers a Power output fault zone. The control unit deactivates the output when the zone has been restored and a user has acknowledges the fault by entering a valid access code.	No
Tamper (16)	The control unit detects tamper on any device; deactivates when tamper is reset.	Yes
Zone Omit (Setting) (17)	The user Omits a zone while setting the system. The output deactivates when the control unit restores the zone.	Yes
Zone Omit (System) (18)	(Operates only when DD243 is enabled.) In the event of an unconfirmed alarm, the system will rearm itself when the confirmation timer expires. If the zone that caused the unconfirmed alarm is still active at the time of the rearm, the control unit will omit that zone and activate the output. The control unit will restore the zone and output when a user or engineer resets the system.	Yes
General Fault (19)	There is any event that causes an alert indication on the keypad.	Yes

Type:	Active when:	Assign to Partitions?
ATS Test (20)	(This output type appears only for Plug-by outputs.) The line fault input signal goes to 12V. The operation of the Line Fault input and the ATS test output complies with the requirements of BSIA form 175.	No
Siren (21)	The control unit starts a full alarm, a panic alarm or a fire alarm (the siren has a distinctive tone during a fire alarm). The control unit deactivates this output at the end of the siren time. See page 56 to choose the siren duration.	Yes
Strobe (22)	a) The control unit starts a Full alarm, panic alarm or fire alarm. The output remains active until the user disarms the system. b) Setting or unsetting, if you have selected "strobe on set" and/or "strobe on unset", see pages 46 and 46.	Yes

Type:	Active when:	Assign to Partitions?
Entry Exit Follow (23)	The entry or exit time starts and deactivates at the end of the entry/exit time, or if the entry/exit time is terminated. The output can be used for a separate entry/exit buzzer. Note that the output does not operate if the exit mode is silent set or instant set.	Yes
Armed (24)	The system is full or part set.	Yes
PIR Set Latch (25)	The system is set. Inactive when the system is unset or an alarm condition occurs. The output is active for one second when a reset is performed or when the control unit leaves installer mode.	Yes
Shock Sensor Reset (26)	Exit time starts. The output remains active for five seconds. Use this output to reset shock sensors (for example, the "Viper").	Yes
Walk Test (27)	A user starts Installer- or User Walk Tests. Also active during the time between silencing and resetting the system. This output can be used on movement detectors that are able to switch off the Walk Test lamp in any state other than a Walk Test.	No

Type:	Active when:	Assign to Partitions?
Smoke Sensor Reset (28)	This output is active (0V) all the time except when a user acknowledges a fire alarm: after which the control unit deactivates the output for three seconds. This output type is designed to be connected to low-voltage smoke detector reset terminals.	Yes
24 Hour Alarm (29)	The control unit starts a 24 hour alarm.	Yes
Setting Complete (30)	The control unit finishes setting. Active for 10 seconds.	Yes
Unset Complete (31)	Someone unsets the system or disarms it after an alarm. The output is active for 10 seconds.	Yes
Full Set Ready (32)	None of the detectors are reporting "alarm" signals.	Yes
Full Set (33)	The system is full set. If the system is partitioned, then the output is active only when all assigned partitions are Full Set.	Yes
Part Set (34)	The system is part set.	Yes
Part Set B (35)	Setting Part Set B. Deactivated on unsetting Part Set B. (Available only in a Part Setting system)	No
Part Set C (36)	Setting Part Set C. Deactivated on unsetting Part Set C. (Available only in a Part Setting system)	No

Type:	Active when:	Assign to Partitions?
Part Set D (37)	Setting Part Set D. Deactivated on unsetting Part Set D. (Available only in a Part Setting system)	No
Set Fail (38)	A set command fails. Remains active until the user acknowledges the set fail.	Yes
Zone Follow (39)	A specified zone has been triggered. If you select this type for a zone then the display shows an extra "Follow" option for the output. Use this option to select the zone you wish the output to follow. (You can follow a "not used" zone.)	No
Zone Alarm (40)	The selected zone causes an alarm. Deactivated when the alarm has been reset. When programming this output type the installer can select a specific zone for the output to follow. (You can follow a "not used" zone.)	No

Type:	Active when:	Assign to Partitions?
User Defined (41)	<p>The user switches the output on or off from the keypad, or a remote control. Assign this output type to any outputs that you want the user to control.</p> <p><i>Note: Cooper Security recommend that you DO NOT assign this output type to a plug-by-output.</i></p>	Yes

"Setting Options" and "Partitions" Menu

Part Setting or Partitioned System?

When you first power-up a new i-on40 (see *i-on40 Installation Guide*), or if you restore an i-on40 control unit to factory defaults (see page 53), you must choose between having a Part Setting system or a Partitioned system.

If you select a Part Setting system then the Installer Menu contains a "Setting Options" sub menu. If you select a partitioned system then the installer menu contains "Partitions" sub-menu instead.

Both of these menus contains the same options, but organised in slightly different ways:

The Setting Options sub-menu contains all the options to program entry, exit and alarm response for a single alarm system with a Full Set and **three** Part Set levels.

The Partitions sub-menu is divided into four partitions. Each partition behaves like a complete, independent, alarm system. However, each partition has only Full Set and **one** Part Set.

Table 2 on the next page shows the layout of both the Setting Options and the Partitions menus. Since so many of the options work in the same way in both of these

menus, the table shows the page number where the description of each option can be found.

3 SETTING OPTIONS	PAGE	3 PARTITIONS	PAGE
Full Set		Partition 1...4	
Name	44	Name	44
Exit mode	45	Exit Mode	45
Settle time (see note 1)	46	Settle Time (see note 1)	46
Exit time (see note 2)	46	Exit Time (see note 2)	46
Entry time	46	Entry Time	46
Strobe on Set	46	Alarm Response	46
Strobe on Unset	46	Strobe on Set	46
Part Set B		Strobe on Unset	46
Name	44	Part Set Exit Mode	45
Exit Mode	45	Part Set Settle Time (see note 1)	46
Settle time (see note 1)	46	Part Set Exit Time (see note 2)	46
Exit time (see note 2)	46	Part Set Entry Time	46
Entry time	46	Part Set Alarm Response	47
Alarm Response	47	Part Set Final Exit	47
Part Set Final Exit	47	Part Set Entry Route	47
Part Set Entry Route	47	Part Set Strobe Set	47
Strobe on Set	46	Part Set Strobe Unset	46
Strobe on Unset	46	Partition 2...4	
Part C, D (Same as Part Set B)		Full Set Link	48

Notes:

1. Appears only if Exit Mode is "Final Door".
2. Appears only if Exit Mode is "Timed Exit" or "Silent Set".

Table 2. Setting Option and Partition Menus

Notes for Part Set Options

In a Part Setting System, for Part Set B to work you must have at least one zone with the attribute Part Set B = "Yes", see page 16

In the same way For Part Set C to work you must have at least one zone with the attribute Part Set C = "Yes". For Part Set D to work you must have at least one zone with the attribute Part Set D = "Yes".

In a Partitioned System, for part set to work within a partition you must assign the "Part Set" attribute to at least one zone belonging to the partition.

Options

Note: The default settings for these options are compliant with EN50131, see Appendix 1. Changes to some of the defaults may render the system non-compliant.

Name

Use this option to give the Full Set, Part Set, or

Partition a name. The control unit displays this name to the user during setting.

Exit Mode

The exit modes available are:

Timed Set Use this option to make the system set after a delay. Use the Exit Time menu (see page 46) to choose the delay.

Final Door Set Use this option to complete setting the system by closing a door fitted with a Final Exit zone detector. Note that the exit time is infinite in this option.

Note 1: If you wish to use Final Door Set exit mode when part setting then:

a) Make sure that you include a zone with the Final Exit type as one of the part set zones.

b) Make sure you select "Final Door" in Part Set Final Exit As (see page 47).

Note 2: If you wish to use Final Door Set exit mode for a Partition then make sure you include a zone with the type Final Exit in the Partition.

Note 3: Do not try to make a PIR zone act as a Final Exit. Radio PIR detectors have a "lock out" period after each activation in order to conserve battery power. When you set (or part set) the system a PIR may still be in lockout, during which it cannot send a signal to complete the setting process.

Instant Set The system sets immediately and without any setting tone. The keypad(s) give confirmation tone when the system is set.

Silent Set The system sets after the time programmed in the Entry/Exit Time

menu but does not give any exit tones. When the system sets the keypad gives a double beep confirmation tone.

The keypad(s) give a double beep confirmation tone at the end of all setting modes.

Settle Time

This option allows you to define a time delay to allow detectors to settle before the system sets. This may be needed if detectors are being set off by air movements caused by the final door being closed. During this period, the sounders stop and the system sets but the control unit ignores any alarms generated by the detectors.

Enter two digits to specify a time in seconds, from 01 to 30.

Note: This option is available for Final Door Set exit mode only.

Exit Time

The exit time can take any value between 10s and 120s.

Note: If you select Final Door Set or Instant Set for the exit mode then the Exit Time option does not appear in the menu.

Entry Time

The entry time can take any value between 10s and 120s. The entry time you select in this option applies to Full set and all Part Sets.

Strobe on Set (Part Set Strobe Set)

When set to ON this option causes the control unit to activate any output programmed as Strobe, plus the strobe on any 760ES wireless siren. The outputs/strobes are active for three seconds after the system sets. Strobe On Set applies to Full Set and all the Part Sets.

Strobe on Unset (Part Set Strobe on Set)

When set to ON this option causes the control unit to

activate any output programmed as Strobe, plus the strobe on any 760ES wireless siren. The outputs/strobes are active for three seconds after the system unsets. Strobe On Unset applies to Full Set and all the Part Sets.

Alarm Response

You can select one of the following:

Internal:	Keypads and loudspeakers
Siren	Keypads, loudspeakers and siren
Siren + Comms	Keypads, loudspeakers, siren and communication.

Part Set Final Exit As

This option controls how the system will treat Final Exit zones in a part set.

Final Door In a Part Setting system, any Final Exit zones with the Part Set B, C or D attributes will continue to act as Final Exit zones during part set.

In a Partitioned system, any Final Exit zones, belonging to the partition, with the Part Set attribute will continue to act as Final Exit zones during part set.

Normal Alarm In a Part Setting System any Final Exit zones with the Part Set B, C or D attributes will act as Normal Alarm zones during part set.

In a Partitioned system, any Final Exit zones, belonging to the partition, with the Part Set attribute will act as Normal Alarm zones during part set.

Part Set Entry Route As

This option controls how the system treats Entry Route zones during part set.

Entry Route In a Part Setting system, all Entry Route zones with the Part Set B, C or D attributes will continue to act as Entry

	Routes during part set. In a Partitioned system, all Entry Route zones, belonging to the partition, with the Part Set attribute will continue to act as Entry Routes during part set.
Final Exit	In a Part Setting System, any Entry Route zones with the Part Set B, C or D attributes will act as Final Exit zones during part set. In a Partitioned system, any Entry Route zones, belonging to the partition, with the part set attribute will act as Final Exit zones during part set.

Full Set Link

The Full Set Link option is available on Partitioned systems. Full Set Link allows you to set up a Common Area. See Appendix III for an example of how to use a Common Area.

Partition 1 is always the Common Area. You can link Partition 1 to any of the other partitions. When all of the linked partitions are set, then the control unit Full Sets Partition 1. In addition, the system takes on whatever Alarm Response you have allocated to Partition 1.

System Options

This section of the Installer Menu contains a series of options that affect the working of the alarm system as a whole.

Note: The default settings for these options are compliant with EN50131, see Appendix 1. Changes to some of the defaults may render the system non-compliant.

Wired Zone Type

Normally the control unit asks you to select the zone wiring type when you power up a new installation for the first time, or when you restore the control unit to factory defaults (see page 53).

This option lets you change the zone wiring type. Note that there are several options of resistor values for FSL: the keypad display shows the alarm contact resistor/end of line resistor values for each option.

If you select "4 Wire CC" then the control panel provides eight wired zones, numbered zone 01 to zone 08.

If you select any of the FSL options then the control unit provides 16 wired zones, numbered zone 01 to zone 16.

See *i-on40 Installation Guide* for wiring details.

User Access

To give users access to various system facilities select *System Options – User Access*. Press the ▲ or ▼ keys to scroll up or down the list on the display. To allow access press ► repeatedly until "Yes" appears next to the selected option. To deny access press ► until "No" appears next to the selected option. Press ✓ when you have finished.

PA Keys Active

This option allows users to start an alarm from the keypads by pressing both the Panic Alarm keys at the same time. This option applies to all keypads, both radio and wired, and is not affected by allocating keypads to specific partitions.

Yes The PA keys on all keypads are functional.

No The PA keys are disabled.

Quick Set

Note: If you enable the quick set keys the control unit no longer complies with EN50131.

This option controls the operation of the A, B, C or D keys.

Yes It is possible to set the alarm system by pressing A, B, C or D without entering an access code.

No The user must enter an access code (or present a tag) before pressing the A, B, C or D keys.

Quick Omit

This option allows users to omit a zone that is active (has its alarm contacts open) while they are setting the system. The zone must have the Omittable attribute (see page 16).

- Yes By pressing ✓ the user can set the system if there are zones with the Omit Allowed attribute active.
- No The user must go to the Omit Menu to set the system if a zone is active.

User Code Required

Use this option to ensure that an installer or maintainer cannot gain access to program the system unless a user is present:

- Yes After the installer/maintainer enters their access code, the system asks for a user access code before allowing access to the Installer Menu.
- No The installer/maintainer can enter the Installer Menu by simply keying in their own code.

User Reset

This menu option determines under what circumstances a user or the installer can reset the system after an alarm.

Zone alarms

(Appears when if *System Options – DD243 – Confirmation* is set to "Off", see page 51.)

- Yes The user can reset the system after an alarm triggered by a zone's alarm circuit.
- No The installer must reset the system after an alarm triggered by a zone's alarm circuit.

Zone Tamper

- Yes The user can reset the system after an alarm caused by a zone's tamper circuits being triggered.
- No The installer must reset the system after an alarm caused by a zone's tamper circuits being triggered.
- Note: This setting is required for INCERT approval.

System Tamper

- Yes The user can reset the system after an alarm caused by a system tamper, for example the control unit lid opening, or a keypad being opened.
- No The installer must reset the system after a system tamper alarm.

Note: This setting is required for INCERT approval.

DD243 (UK Only)

Note: This menu is visible only when System Options – Restore Defaults – Country defaults is set to "UK".

In order to program your requirements for DD243 select *System Options - DD243*. The options available are:

Confirmation

When set to 'On' this option enables the features designed to ensure the system complies with DD243:2004.

Note: When using Confirmation, and the system is programmed for Installer Reset after an alarm, the user cannot set the system after an alarm until the installer has carried out a reset.

Confirmation Time

This option determines the length of the confirmation time.

After Entry

Never: The control unit turns alarm confirmation off if the user enters by the entry door (used for DD243:2004 clauses 6.4.2 and 6.4.4).

1 zone: The control unit starts a confirmed alarm if the intruder activates one or more zones, not on the entry route, after entering the premises through the final exit zone.

2 zones: The control unit starts a confirmed alarm if an intruder activates two (or more) zones, not on the entry route, after entering the premises through the final exit zone (used for DD243:2004 clauses 6.4.5).

Entry Keypad Lock

This option determines whether the user can unset the system by entering an access code after opening the entry door.

Off: The user can enter an access code at the keypad after the entry door opens (used for DD243:2004 clause 6.4.4).

On: The user must unset the system by some means other than the keypad, for example prox tag or remote control (used for DD243:2004 clause 6.4.5).

Note: This option functions when confirmation is ON and communications is enabled. If communications is disabled this option has no effect.

Sounder on

Unconfirm: When the system is set the control unit activates the internal sounders when an unconfirmed alarm occurs.

Confirm: When the system is set the control unit does not activate the internal sounders until a confirmed alarm occurs.

Siren on

Unconfirm: the control unit operates the siren for all alarms (and overrides any Siren Delay).

Confirm: When the system is set the control unit does not activate the siren(s) until a confirmed alarm occurs.

Unconfirmed Reset

If you enable alarm confirmation then this option overrides *System Options - User Reset – Zone Alarms* (see page 50). You may then use the options below:

User: The user can reset after an unconfirmed alarm.

Installer: The user cannot reset after an unconfirmed alarm, the installer must do it.

Note: If a user causes an alarm which would require Installer reset then they have 90s to abort the alarm, which they can then reset themselves.

Confirmed Reset

If you enable alarm confirmation then this option overrides *System Options - User Reset – Zone Alarms* (see

page 50). You may then use the options below:

User: The user can reset after a confirmed alarm.

Installer: The user cannot reset after a confirmed alarm, the installer must do it.

Note: If a user causes an alarm which would require Installer reset then they have 120s to abort the alarm, which they can then reset themselves.

Profiles

This option loads a set of standard entries for all names, and sets up other options. Once you have loaded the profile you can edit any of the settings to suit an individual installation.

Language

The control unit can use one of several languages in its display. To change the language select *System Options – Language*.

Changing the language does not affect any stored names for full/part set, detectors, outputs or users, and does not change any defaults.

Restore Defaults

Country Defaults

Each country has different settings for PSTN communications and alarm reporting. You can use this option to select default settings for a given country.

Changing the country does not change the language used by the display.

Factory Defaults

If you wish to remove all programming from a control unit (perhaps to re-install it at another site) select this option.

Note that Factory Defaults erases all wireless devices, names and stored texts. However, selecting Factory Defaults does not erase the log, or delete any users

Installer Name

This field controls the user name employed by the login screen of the i-on40 Web Server. When logging in to the

Web Server you must key into the Username field the same text as you have programmed into the Installer Name field.

Installer Code

The default Installer access code is 7890. Cooper Security Ltd recommend that you change this code to some other number. To change the Installer access code select *System Options-Installer Code*.

The Installer code allows you to enter the Installer Menu, and carry out an Installer reset. However, the Installer code does not allow you to set or unset the system.

When logging into the i-on40 Web Server you must key into the password field the same code as you have programmed into the Installer Code field.

Keypad Text

If required the installer can key in a text message that appears on the first line of the display in the standby screen. This could be, for example, the name of the installer's company. See page 7 for hints on editing text.

Remote needs Entry

Instead of using an entry timer triggered by a Final Exit zone to allow the user to gain access to the control unit and unset the system, the user can employ a remote control. To chose between either of these options select: *System Options – Remote needs Entry*. The options available are:

Enabled:

The user must first trigger an entry zone and start the entry timer before unsetting the system with a remote control.

Disabled:

The user can unset the system using a remote control without first starting the entry timer.

PA Response

During a PA alarm the control unit starts communications (provided you have a communication module fitted and

enabled, or the communications outputs wired to an appropriate communicator and correctly programmed). This option controls the associated audible alarm.

- Audible** As well as starting communications the control unit starts PA alarm tones from the keypads and loudspeakers, and activates any siren outputs.
- Silent** The control unit keeps the PA alarm silent: there are no alarm tones from keypads or loudspeakers and any siren outputs remain inactive.
- Displayed** All keypads display a PA alert message immediately (a user does not have to key in their access code to see the message). The control unit also starts PA alarm tones, activates any siren outputs, and starts communications.

Auto Rearm

(Appears when if *System Options – DD243 – Confirmation* is set to "Off", see page 51.)

To change the number of times that the system will re-arm when the siren time expires select: *System Options-Auto Rearm*.

Select NEVER to make the system never re-arm (the system will go into alarm once only). Select one of the other options to make the system re-arm once, twice, three, four or five times, or always. The system re-arms all closed zones, but not detectors that are still sending alarm signals.

If the system has rearmed, then when a user enters the system through the Final Exit door the control unit will give an audible internal alarm in place of the normal entry tone.

Siren Delay

When the system is set and (for example) an intruder violates a zone, then the system waits for the

programmed Siren Delay before operating the siren. The system then operates the siren for the programmed Siren Time.

Note: Siren Delay has no effect if the Alarm Response Mode does not require communications or if a line fault is detected.

Siren Time

This option changes the length of time that the system operates the siren during an alarm.

Note: The durations offered by the display apply to a siren wired directly to the control unit. The 760ES radio siren has one of three fixed sounder durations in an alarm: 5seconds, 3mins or 15mins. These fixed durations are designed to preserve the battery life of the radio siren.

Entry Alarm Delay

Use this option to determine what the system will do if a user strays from an Entry Route zone during entry. (This option is available to provide compliance with EN 50131-1.)

Select "No" to make the system give an alarm immediately if the user strays from an entry route zone during entry. *Note: This is not compliant with EN50131.*

If you select "Yes" and the user strays from an entry route zone during entry then the system waits 30 seconds before raising a full alarm. The system also gives an internal alarm during the 30 second wait.

If the user enters an access code or presents a tag before the end of the 30 seconds internal alarm then the user can reset the system.

Supervision

If a wirefree detector loses contact for more than 20 minutes then the control unit logs the event as "RF Warning". In addition, the control unit inhibits setting. If a user overrides the inhibition then the control unit logs the event as an RF warning override.

If a wirefree detector loses contact for more than two hours then the control unit raises an alarm. The options available for this alarm are:

Option:	With system SET, the control unit:	With system UNSET the control unit:
Disabled	Does nothing.	Does nothing.
Fault	Logs the event (but does NOT display any alert or fault tone).	Displays an Alert and sounds a fault tone and logs the event.

Jamming

The control unit can detect interfering (or "jamming") radio signals. To enable jamming detection select *System Options - Jamming*.

If the control unit detects jamming once you have enabled this option then the display shows an Alert message for the user.

Force Set

You may wish to allow a user with a remote control to set the alarm system when one or more of the detectors are not working or are open (active).

Note: If you enable "Force Set" then the system does not comply with EN50131.

There are three options available:

Off

The remote control user cannot force set the system, even if you have applied the force set zone attribute to any zones.

Confirm

The remote control user can force set the system. They must operate as follows: 1) the user presses the appropriate button to set the system, 2) the control unit does not start setting, 3) the user presses the same remote control button to confirm that they wish to continue setting the system.

On

The user need only press the remote control button once to complete setting the system.

Note: The Confirm and On options will also allow a user with a remote control to set the system if a reset is required after an alarm.

If any user is attempting to reset the system from a wired keypad when a remote user tries to set the system, then the control unit will temporarily ignore the remote user.

Tamper Omit

If a user omits a zone, it may be necessary to also omit the tamper belonging to that zone. This option allows you to do that:

Enabled

The tamper is omitted when a user omits a zone.

Disabled

The tamper is still operational when a user omits a zone.

Anti-Code Reset

Anti-code reset allows an alarm company to control remotely whether a user can reset the system after an alarm. If the system is programmed for anti-code reset, then after an alarm a user can silence the sounders. However, the display tells the user the first zone to alarm, and then instructs them to call the ARC and quote a four digit code. This four digit code is called the "reset code".

If the ARC decides to allow the user to reset the system then they:

Key the reset code into a device or program that produces an "anti-code".

Tell the alarm system user the anti-code.

The alarm system user then keys the anti-code into their keypad and the alarm system resets.

If order for this procedure to work both the alarm system control unit and the ARC must have the same "CSID"

code. This acts as a seed for computing both the reset code and its anti-code. The ARC usually generates the CSID code.

To install the CSID code:

1. Call the ARC and obtain the CSID code.
2. Enter the Installer Menu and select *System Options – Remote Reset*.
3. Key in the CSID code. As you press the final digit the control unit stores the code and displays the *System Options* menu.

Note: To disable this option key in "0000" over the existing code.

To ensure that users cannot reset the system after alarm unless they enter an anti-code:

1. Select *System Options – User reset – Zone Alarms* and set it to "No" (this ensures that users cannot reset after an alarm).
2. If DD243 is enabled then select *System Options – DD243 – Confirmed Reset* and set it to Installer.

Silence Alerts

This option controls the length of time that the keypad gives the alert tone (a brief 'beep' every few minutes) when there is an alert. The options are:

User

The keypad gives the tone until a user keys in their access code to acknowledge the alert.

30, 60, 120 minutes

The keypad gives the alert tone for the selected time.

No Alert Tones

The keypad gives no alert tone. (The red LEDs around the navigation key glow to show that there is an alert.)

Mains Fail Delay

This option controls the length of time that the control unit waits until starting an alert if the mains supply fails.

The values available are 0 to 10 minutes. Note that when the value is set to 0 minutes, mains interruptions of less than 9 seconds will not start an alert.

Communications

Note: If you have connected a plug-by communicator then use the Outputs - Plug-by Outputs menu to program the communicator.

The Communications option in the Installer Menu contains all the options needed to program how the control unit will communicate alarms. Within the Communications option, the main menu items deal with the following areas:

ARC Reporting

Deals with reporting to a central station using either SIA, CID or Fast Format.

Speech Dialler

Deals with recording speech messages, selecting the alarm types that will trigger them, and selecting destinations for the messages. This sub-menu is visible only when the i-sd02 or i-gsm-2 modules are fitted.

SMS

Deals with setting up text messages, selecting the alarm types that will trigger them and selecting their destinations. This sub-menu is visible only when the i-sd02 or i-gsm-2 modules are fitted.

Line Fail Reporting

Allows you to select how the control unit reports a communications failure.

IP Network (Own)

The Web Server sub-menu deals with setting the control unit's own IP address and access to the built in web-pages.

The other sub-menus within IP Network (Own) menu allow you to set up the IP address and other parameters for any attached Ethernet or GPRS modules. *These sub-menus will not appear if the modules are not fitted.*

Downloading

Deals with setting up phone numbers, account numbers for the downloader, and controlling the type of connection you wish to allow.

Note: Apart from Downloading and IP Network (Own), the above menu items appear only if the appropriate module is fitted.

The control unit is designed to alert the user if it fails to complete a programmed communication. If alarm reporting fails then the keypad displays an alert by lighting the red LEDs around the navigation keys. Although the user may acknowledge the alert, the control unit will not remove the alert until communication is completed successfully.

If you wish to remove a communications module from a system, ensure that you first disable communications in the appropriate menus:

To remove a: Disable:

i-sd02, i-gsm02 ARC Reporting, Speech Dialler, SMS

GPRS, Ethernet ARC Reporting, IP Network

Otherwise the control unit will continually report a communications failure.

ARC Reporting

To program how the control unit will communicate with an ARC select *Communications - ARC Reporting*.

Call Mode

To choose the call mode for communicating with an ARC select: *Communications – ARC Reporting – Call Mode*. The call modes available are:

Disabled.

The control unit disables all ARC communications.

Single.

The control unit reports to the first telephone number in the Phone Book, using a single account number (see "Account Numbers" on page 63).

Operation: The control unit dials the number and attempts to connect with the ARC. If the call fails, the

control unit ends the call and then re-attempts to connect up to a maximum of 15 times.

Alternate.

The control unit reports to one of the two telephone numbers in the Phone Book.

Operation: The control unit dials the first telephone number and attempts to connect to the ARC. If it fails, it will then close down and dial the second telephone number and attempt to connect to the ARC. If received and acknowledged on this attempt, the alarm transmission is complete. If the control unit fails to connect to the second telephone number, it will close down again and re-attempt to connect to the first telephone number. The control unit will continue to shuttle between the two numbers up to 15 times.

Phone Book

This option appears only when there is an i-sd02 or i-gsm02 module fitted. Use this menu to store two telephone numbers that the control unit uses to report alarms to the ARC. The control unit accepts one telephone number if you choose Single in the Call Mode menu, or two telephone numbers if you select Alternate in the Call Mode menu.

The control unit can store telephone numbers up to 31 digits long.

Use the ▲ and ▼ keys to move the cursor backwards and forwards through the number if you wish to edit it.

Press ◀ to delete the digit to left of the cursor.

Press * to add a 2 second pause, if required. The display shows this as a comma.

IP Network

This option appears if a GPRS or Ethernet module is fitted. Use it to program alarm receiving company destinations that the control unit must report to over the internet.

Note: Before programming the control unit to use the IP Network please make sure that:

1. You understand basic IP terminology.
2. You have obtained the necessary information from your Internet Service Provider.

Unit Name

Use this option to store a unique name for the unit.

Polling IP Address

Key in the IP address of the remote polling engine. If the ARC is not using a polling engine then leave this option blank.

ARC IP Address

Use this option for the ARC's main IP addresses. This option provides two entries for storing a primary and a secondary ARC IP address.

Account Numbers.

To store an ARC account number select *Communications – ARC Reporting – Account Numbers*.

If you are programming a partitioned system then the control unit gives you the opportunity to store an account number for each partition. If you are programming a Part Setting system then you can store one account number.

With CID reporting the system reports alarms using a four digit account code.

With Fast Format reporting you can use four-, five- or six-digit codes. The control unit pads five-digit codes to six digits using a leading zero. The control unit leaves four- and six-digit codes unchanged.

Note: If you need to add a letter to the account code press the numbers keys repeatedly until the letter you want appears on the display. See page 7.

Report Type

To choose the report type to send to the ARC select: *Communications – ARC Reporting – Report Type*.

The report types available are: Fast Format, Contact ID, SIA 1, SIA 2, Scancom SIA 3, Extended SIA 3, Contact ID in SMS.

Fast Format Channels

(See Appendix II for a brief description of Fast Format.)

If you selected Fast Format in Report Type then you can select *Communications - ARC Reporting - Fast Format Channels* to allocate one of the following events to each of eight channels (defaults in brackets):

Not used

Fire Alarm (default Channel 1)

Panic Alarm (default Channel 2)

Burglar Alarm (default Channel 3)

Open/Close (default Channel 4)

Alarm Abort (default Channel 6)

Technical Alarm (default Channel 8)

Confirmed Alarm (default Channel 7)

RF Low Battery

RF Supervision (see note 5)

RF Jamming (see note 5)

Mains Fail

Tamper

Open (see note 1)

Close (see note 1)

Zone Omitted - setting (Channel 5. see note 2)

Zone Omitted - system (see note 4)

Burg Partition 1 (partitioned system only)

Burg Partition 2 (partitioned system only)

Burg Partition 3 (partitioned system only)

Burg Partition 4 (partitioned system only)

Notes: 1. Open and Close provide the same functions as Open/Close, but on two separate channels.

2. Zone Omitted - the control unit sends this signal for five seconds when a user omits a zone.

3. The control unit delays reporting/logging either mains loss, or exiting Installer Menu with mains loss, by 15-18 min (chosen randomly). For Scandinavia the control unit waits at least 60 minutes before reporting.

4. Appears only when DD243 options enabled.

5. The control unit communicates Jamming, Supervision when the system is unset.

CID/SIA Events

(This menu appears only if you select "Contact ID" or any of the SIA versions in *Communications - Report Types*. See Appendix II for a description of the CID and SIA formats.)

To make programming easier, the i-on40 groups CID/SIA telegrams together into Report Groups. Table 3 lists the telegrams included in each report group, and the relevant CID/SIA codes. When you enable a Report Group, then you are enabling the control unit to send any of the telegrams in that group.

CID/SIA alarm transmissions will take considerably more telephone time than Scancom Fast Format since the system transmits extended alarm data to the ARC.

Note: The control unit delays reporting/logging either mains loss, or leaving Installer Menu with mains loss, by 15-22 minutes (chosen randomly). The control unit delays reporting/logging either mains restore, or leaving Installer Menu with mains restored, by 60-90 sec (chosen randomly).

Table 3. CID/SIA Report Groups

Report Group	Includes:	Code	
		CID	SIA
Fire Alarm	Fire and fire restore	110	FA, FR
Panic Alarm	Zone PA and restore	120	PR
	Keypad PA, Keypad PA restore	121	HA
	RF PA, RF PA restore Radio keypad PA, radio keypad PA restore		
Burglar Alarm	Burg and Burg restore	130	BA, BR
Technical Alarm	Technical alarm and restore	150	UA
Tampers	Keypad tamper and restore	137	TA, TR
	Detector tamper and restore		
	Lid tamper and restore		
	Bell tamper and restore		
	Radio keypad tamper and restore		
	External siren tamper and restore		
	User code tamper	461	JA, JV
Set/Unset	System arm and disarm	401	OP
Part Set	System part set	401	CL
Reset	System reset	305	OR
Exit Timeout	Exit timeout and restore	457	

Omit	Zone omit	573	BB
RF Supervision	Zone supervision fail and restore	381	BZ
	Radio keypad supervision fail and restore		
	External siren supervision, fail and restore*		
RF Jamming	Jamming fail and restore*	344	
RF Battery/PSU	Smoke power supply unit fail and restore	337	
	Zone low battery fail and restore	384	
	Ext Siren low battery fail and restore	338	
Panel Battery	Control unit low battery and restore	302	
	Control unit battery missing and restore	311	YM, YR, YT
Mains Fail	Mains fail and restore	301	AR, AT
Faults	Smoke fault and restore	373	
	Comms line fault and restore	351	LR, LT
Installer Mode	Installer mode start	627	LB
	Installer mode end	628	LS
User Code Change			JV
Time Date Reset	Time and date reset	625	JT
Downloading	Downloading successful	412	RS
	*Notes: 1. The control unit communicates Jamming, Supervision when the system is unset.		

Restorals

When you enable a CID/SIA Report Group, the control unit sends the relevant telegram both when an event occurs, and when the condition causing the event stops. The second transmission of the telegram is also called a “restore”.

You can enable or disable restoral reporting by selecting *Communications – ARC Reporting – Restorals*. The options available are:

Disabled

Restore off. The control unit does not communicate restores.

Enabled.

Restore on. The control unit does communicate restores.

Burg Comms Rearm

(This menu appears only if you select "Fast Format" in *Communications - Report Type*.) This menu option determines what the control unit does with the "Burg" Fast Format channel 3 at the end of the siren run time. There are two options:

Disabled

The channel stays active until an Installer or user resets the system.

Enabled

The system rearms Channel 3 once the siren timer has expired. Once the Channel is rearmed, the system is ready to report any new alarm. The system bypasses any detectors that are still triggered.

Notes:

If a Final Exit Zone is triggered, Channel 3 becomes active at the end of the Programmed Entry time.

21CN FF Ack Time

(This menu appears only if you select "Fast Format" in *Communications - Report Type*.)

A PSTN line connected to a BT21CN line (or equivalent) will take longer to acknowledge a Fast Format transmission. This option allows you to adjust the length of time that the control unit waits for the ARC acknowledgement. You can adjust the acknowledgement time from a minimum of 400ms up to a maximum of 1200ms in 100ms steps.

Send Tamper as Burg

When using CID reporting this option allows you to program the control unit to send tampers as alarm.

If you select Disabled, (the default) then the control unit sends all CID messages as specified in *Communications – ARC Reporting – CID/SIA Events*.

If you select Enabled then for full alarm response the control unit sends tampers as burglary (BA) and sends Contact ID 130 in place of Contact ID 137.

Dynamic Test Call

In dynamic testing the system makes a test call 24 hours after the last alarm communication. To enable dynamic testing select *Communications – ARC Reporting – Dynamic Test Call – Enabled*.

Static Test Call

In static testing the system makes a test call either on:

Every day at one particular time of day or

On the same day of every week, or

On one day every month.

To make test calls at a set time every day select *Communications – ARC Reporting – Static Test Call – Daily*. From the display select a number between 01 and 24 to choose the time of day for the call. For example, select 18 to program the control unit to make a static test call at 6:00pm every day.

To make test calls on the same day every week select *Communications – ARC Reporting – Static Test Call – Weekly*. From the display select the day of the week on which the call should take place. Next, key in the hour of the day (01 to 24) on which the test call should occur..

To make test calls on one day every month select *Communications – ARC Reporting – Static Test Call – Monthly*. From the display select a number between 1 and 31 to specify the day of the month on which the call should take place. Next, key in the hour of the day (01 to 24) on which the test call should occur.

For each of the three types of call, the control unit will add or subtract up to 16 minutes at random to the hour you specified. This is to make sure that the ARC is not overwhelmed with a flood of test calls from systems that have all been given the same time.

Select *Communications – ARC Reporting – Static Test Call – Disabled* to disable static test calls.

Speech Dialler

The i-sd02 has a built-in speech dialler. The module can record five speech messages using its internal

microphone and replay them to a pre-programmed telephone number to report an alarm. One message is called the "Home message", and is always played at the beginning of a report. You should use this message to identify the control unit and it's location. The other four messages allow you to record some indication of the type of event causing an alarm, for example: "Fire" or "Panic Alarm". The control unit plays these messages after the home message.

The i-sd02 can record up to ten seconds of speech for the Home message, and up to five seconds of speech for each of the alarm messages.

While programming the speech dialler you link each message with the specific alarm type you wish to report. You then select a set of destinations for each message, where each destination corresponds to one of the telephone numbers you wish to call (see diagram below).

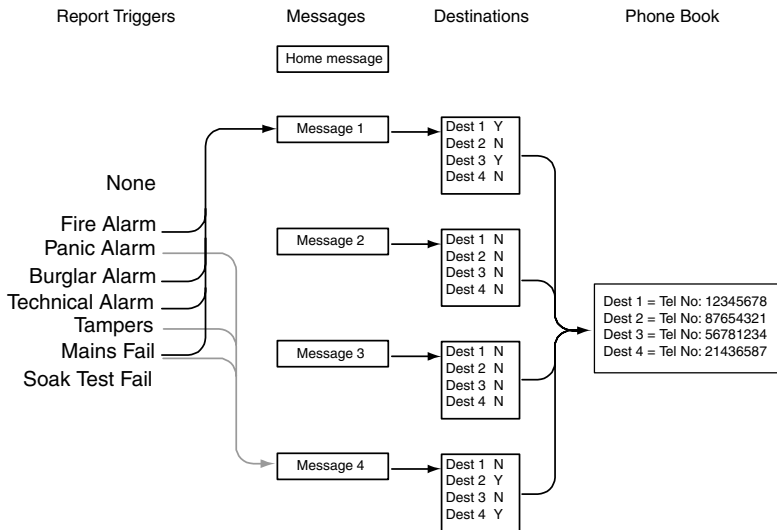


Figure 2. Speech Dialler Programming.

If the control unit has Call Acknowledge enabled (see page 73), then the person receiving the speech messages can control the link by sending DTMF tones back to the

control unit (usually by pressing buttons on the telephone key pad). The commands available are:

Function	Key
End this call	DTMF '5'
Play 'Home' and 'alarm' message	DTMF '3'
Clear down	DTMF '9'

Note that when the called party answers a speech dialler call there could be a six second delay before the control unit starts playing the home message.

Call Mode

This option enables or disables the speech dialler feature. To employ speech dialling set the call mode to "Enabled".

Messages

To record the speech messages you wish the speech dialler to use enter Installer Menu and select *Communications – Speech Dialler – Messages*.

There are five messages slots available: The Home Message and Messages 1 to 4. Within each message you can use one of the following options:

Record Message Press ► to start recording. The control unit starts recording from the i-sd02's built in microphone. The display shows a progress bar indicating how long you have left to record. Press ✕ to end recording.

Play Message Press ► to play back the message from the i-sd02's speaker.

Delete Message Press ► to delete the message. When the display asks "Delete Message?" press ✓.

Use Lid Tamper This puts the control unit into a special mode where the tamper switch controls the recording and playback of the current message. Use this mode if the control unit is an inconvenient distance from the keypad.

1. Start with the control unit lid off and the tamper switch open.
2. At the keypad select *Use Lid Tamper* and press ✓.
3. At the control unit hold down the tamper switch. When the red LED on the I-SD02 glows recite your message.
4. Release the tamper switch.
5. Pulse the tamper switch briefly.
The i-sd02 plays back your recording.
6. Go back to the keypad and press ✕.
7. If required, replace the control unit lid. **DO NOT** replace the control unit lid until you have left the "Use Lid Tamper" mode.

Phone Book

To record the telephone numbers that you wish to use, select *Communications – Speech Dialler – Phone Book*. (See "Destinations" on page 72 for instructions how to link messages to phone numbers.)

Select one of the telephone numbers.

The display shows the current digits of the selected telephone number.

Key in the telephone number. Press * to add a two second pause, if required. The display shows this as a comma.

Press ✓ when you are happy that the number is correct.

The display then gives you a chance to key in a name for that number. The control unit will display this name in the phone book to help you remember what destination you wanted the message to go to. (See page 7 for hints on editing text.) Press ✓ when you are happy that the name is correct.

Note that once you have set the speech dialler call mode to "enabled" (see page 70) and assigned a report trigger a message, and a message to a telephone number (see below) then the control unit makes this number available in the User Menu. User 01 can enter a new telephone

number in this slot at will. This allows the user to re-direct any speech message destined for this number. The user cannot disable the telephone number by entering a blank number; the fact that they have changed the number is logged.

Triggers

In the i-on40 you can link up to five different trigger events to each speech message. A trigger event is one item selected from a list of alarm types.

To link specific trigger events to individual messages select *Communications – Speech Dialler – Triggers*.

The display shows a list of speech messages. (Note that the home message does not appear. The control unit always sends the home message at the beginning of each transmission.) Select the message that you wish to program. The display then shows a list of five triggers.

Select a trigger and the display shows a list of available alarm events. Select one alarm event for that trigger. When you have selected an alarm event the display shows the list of triggers again. You may program one alarm event for each of the five triggers in the list.

When you finish selecting alarms for each trigger, you have now linked alarm events to triggers, and one or more triggers to a message.

Destinations

Once you have programmed telephone numbers, messages and triggers, you must then link specific messages to individual telephone numbers. To do this select *Communications – Speech Dialler – Destinations*.

Select a message from the list on the display. The control unit will show you a list of telephone numbers. If you gave a telephone number a name then the display shows the name instead of the digits of the number.

Highlight a telephone number and press ► until a “Yes” appears after the number. Press ✓ when you have finished. The control unit will send the selected speech message to every telephone number with a “Yes” next to it.

Note: There are a total of five voice messages available. The control unit always sends the Home Message at the beginning of every speech report. The control unit then sends messages 1, 2, 3 or 4 to the telephone numbers you selected.

Call Acknowledge

If the called party answers a speech dialler call, then they can end the call by sending back a DTMF '5'.

With Call Acknowledge **enabled** the control unit ends the call when it receives a DTMF '5' or '9'. If the control unit does not receive a DTMF '5' or '9' then it attempts to call again (up to three times).

With Call Acknowledge **disabled** the control unit stops further call attempts to that number as soon as it detects a call being answered.

Note that after receiving a DTMF '5' the control unit will go on to call any other programmed speech dialler numbers.

After receiving a DTMF '9' the control unit will cancel all further calls for the current alarm.

SMS

The control unit can send alarm reports by SMS message to any of four telephone numbers. Each alarm report is a single SMS message, comprising:

- A Home Message and a text message. You must program the control unit with the content of these messages.

- The text of the log entry that corresponds to the event causing the alarm.

- The time and date of the alarm.

- The zone name of the zone causing the alarm.

The control unit sends the text in the Home Message to every telephone number you have programmed for SMS messages. The control unit also sends message 1 to telephone number 1, message 2 to telephone number 2, message 3 to telephone number 3 and message 4 to telephone number 4.

When programming SMS you key in the text of each message, link the messages to specific groups of alarms, and then key in the telephone number you want each message to go to.

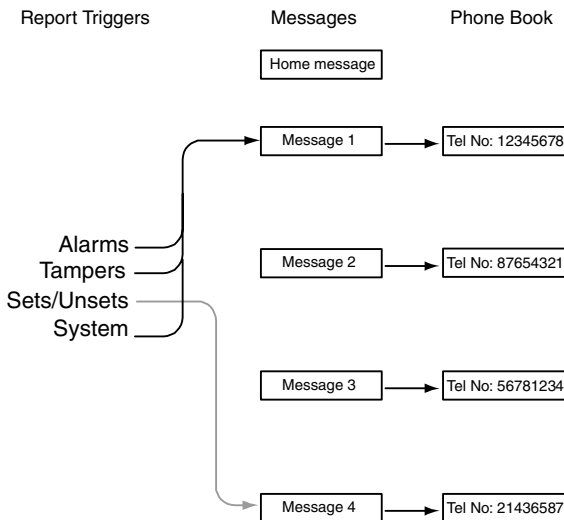


Figure 3. SMS Message programming

Call Mode

This option enables or disables SMS reporting. To employ SMS reporting set the call mode to “Enabled”.

Messages

To set up the text of SMS messages select *Communications – SMS – Messages*.

The bottom line of the display shows the first item in a list of the messages you can program. Press ▲ and ▼ to scroll to the required message followed by ✓ to select it. Then key in the text and press ✓ to finish.

The Home Message provides space for 12 characters. Use the this text to identify the control unit. Each numbered message provides space for 30 characters. Key in a message that relates to the type of alarm event you select as a trigger (See "Triggers" on page 75).

Phone Book

To program the telephone numbers that the control unit will use for SMS message select *Communications – SMS – Phone Book*. The bottom line of the display shows the first of a list of phone numbers. Press ▲ and ▼ to scroll to the required phone number followed by ✓ to select it. Key in the correct digits and then press ✓.

The display then allows you to give the telephone number a name. The control unit will display this name in the phone book to help you remember what destination you wanted the message to go to.

Triggers

You can link a set of alarm events to each message. To link an event select *Communications – SMS – Triggers*.

The bottom line of the screen shows the first message. (Note that the display does not show an entry for the Home Message. The control unit sends the text in the Home Message at the beginning of every SMS message.) Press ▲ or ▼ to scroll to the message you want to program and press ✓ to select it. The bottom line of the display shows the first item in the list of events that you can chose to trigger the message.

The display shows a "Yes" or "No" next to the event you have selected. Press ► to convert the "Yes" to an "No". You can select a "Yes" for more than one event in the list. Press ✓ when you have finished. The control unit will start sending an SMS message whenever it detects one of the events that you have marked with a "Yes".

Line Fail Response

This menu lets you program the system to respond with either audible or silent alarms when the control unit detects a fault on one of its communication lines. To

program Line Fail Response select *Communications – Line Fail Response*.

The exact response depends on whether the system is set or unset, as follows:

Disabled.

The control unit does not monitor the telephone line.

Audible.

If the system is unset then the system logs the event. The keypads produce a short audible tone every minute. Entering a valid access code silences the sounders and the display indicates a telephone line fault. The system can be set again with the line fault present.

If the system is set then the control unit logs the event but does not give any tone or display. The control unit cancels any programmed siren delay if the line is out of order when an alarm occurs.

Note: Cooper Security recommend audible response for line fault.

Silent.

If the system is unset then the display indicates a telephone line fault and the control unit logs the event. The system may be set again with the line fault present.

If the system is set then the control unit does not give any indication or tone but does log the event. The control unit cancels any programmed siren delay if the line is out of order when an alarm occurs.

Line Fail Delay

This menu controls the length of time that the control unit waits until starting an alert if the communications line fails. The values available are 0 to 60 seconds.

IP Network (Own)

This menu allows you to:

- a) Give the control unit its own IP (Internet Protocol) address, used for the built in Web Server

- b) Give any GPRS or Ethernet module their own IP numbers ready for use with IP Alarm Reporting or IP Downloading.

If there is no GPRS or Ethernet module present then the IP Network (Own) menu contains the following options:

Web Server

This sub-menu controls the availability of the control unit's built-in web server. There are two lower options:

Status

Set the Status to Enabled in order to make the web server available. Setting Status to Disabled halts the web server.

Port Number

This is the port that the control unit uses for the web server. The format is a group of digits up to five digits long. The default port is 80.

IP Address

This is the control unit's own IP address. The IP address comprises four groups of digits. Each group is three digits long, and is separated from the next group by a "dot", for example "192.168.000.001". Press "*" to key in the dot.

Sub-Net Mask

If necessary, key in the sub-net mask, for example "255.255.255.000". This number has the same format as the IP address.

Note: If you leave IP Address and Sub-Net Mask blank then the control unit will use DHCP (Dynamic Host Control Protocol) to obtain these values from a DHCP server.

Gateway Address

This is the IP address of the router that connects the local network, to which the i-on40 is connected, to rest of the Internet (or to a larger network). If necessary, key in the gateway IP address. This number has the same format as the IP address.

Note: Once you have entered the details described above, you can see what IP address you have given the

control unit by selecting the About Panel - About Comms - IP Address option from the Installer menu. See page 91.

If there is a GPRS or Ethernet module fitted then the above items appear under a sub-menu titled "Panel Ethernet".

If you have fitted a GPRS module you will also see the menu option "Module: GPRS". This menu has the following options:

IP Address

This is the module's own IP address. If you leave it blank the service provider will give the module an IP address using DHCP. (Cooper Security recommend that you leave this field blank.)

Port Number

If you wish to change the port number used by the module then key in the new port number here.

APN

Key in the GPRS Access Point Name here.

Username

Use this option to store the GPRS User ID.

Password

Use this option to store the GPRS password.

If you have fitted an Ethernet module you will see the menu option "Module: Ethernet". This menu has the following options:

IP Address

This is the module's own IP address.

Sub-Net Mask

If necessary, key in the sub-net mask, for example "255.255.255.000".

Note: If you leave IP Address and Sub-Net Mask blank then the control unit will use DHCP (Dynamic Host Control Protocol) to obtain these values from a DHCP server.

Gateway Address

This is the IP address of the router that connects the local network, to which the i-on40 is connected, to

rest of the Internet (or to a larger network). If necessary, key in the gateway IP address.

Downloading

The control unit can communicate with Downloader software running on a PC. Downloader connects with the control unit either locally over the USB (Universal Serial Bus) port or, if you have fitted a communications module, remotely over a telephone line.

While connected Downloader can inspect and/or change the control unit's programming configuration. If you do not wish to change the configuration you can simply monitor the state of the control unit and its zones from the PC.

In order to use Downloader software you must program following options:

Account

As part of ensuring the security of a connection, Downloader must use an account name and serial number for each control unit.

While the control unit is in Installer Menu you can change the account name and serial number from the keypad: Select *Communications - Downloading - Account*.

Account Name: This can be any string of alphabetic characters or numbers up to 16 characters long.

Serial Number: This must be an eight digit numerical string. If the number you wish to use has less than eight digits then insert leading zeroes.

Connection Type

To choose which physical connection you wish to use select *Downloading - Connection Type*. The options available are:

Remote

Automatically answer calls coming from a remote PC over the telephone network. You will also need to program "Rings to Answer" and/or "Answer on One Ring", see below. (Note that Secure Callback does not work with this option.)

Local

Connect the control unit to a PC (for example a laptop) using a local USB cable.

Note: The control unit will leave the Connection Type menu if Downloader does not make a call within 30 minutes.

See "Access Mode" on page 80 if you want the control unit to answer incoming calls from Downloader without an Installer being present.

Rings to Answer

(This option appears only when the i-sd02 or i-gsm02 module is fitted.)

Select *Downloading - Rings to Answer* to set the number of rings that the system waits before answering an incoming call from the remote PC.

Answer On One Ring

(Also known as Answer Phone Defeat, this option appears only when the i-sd02 i-gsm02 module is fitted.) Use this feature if the alarm system shares a line with other equipment. Select *Downloading - Answer on One Ring*.

When enabled, Downloader "warns" the control unit that a call is coming by ringing the control unit number, waiting for between one and two rings and then hanging up. The control unit now knows to expect a call within the next 10 to 90 seconds. Downloader then rings the control unit again, within 10 to 90 seconds. The control unit answers after the first ring.

Note: When using "Answer on One Ring" set the number of rings in "Rings to Answer" to a higher number than that used by the equipment sharing the telephone line with the control unit. If you do not, then the other equipment will never answer any incoming calls.

Access Mode

This function allows you to provide extra security when a remote PC is dialling into the system. Select *Downloading, Access Mode*.

Once Downloader is connected to the control unit then it has access to all system programming. If you wish to provide secure access then use either Call Out Only or Secure Callback. Please note that you cannot use Secure Callback with Local connection.

Call Out Only.

Someone must start a call to the remote PC manually from within User Menu (select *User Menu – System Config – Call to Dwnldr*).

Secure Callback.

When the remote PC calls, the system waits for the set number of rings (see "Rings to Answer") and then answers. The remote PC sends a control unit ID, the Downloader software version, and indicates which of the two Downloader Telephone Numbers to use (see "Phone Book" below). The system checks that the remote PC is sending the correct control unit ID, and is using the correct Downloader software version. If these items don't match then the system hangs up. If the items do match then the system hangs up and, after a short delay, the system seizes the telephone line and calls the PC using the indicated Downloader Telephone Number.

Notes:

- a) *Secure Call Back must be Disabled until the first "attended" upload has been performed. This first upload can be carried out either from User Menu, or from Installer Menu.*
- b) *Secure Call Back mode does not comply with EN50131.*

Unattended.

The control unit answers as soon as the number of rings set in "Rings to Answer" or "Answer on One Ring" have elapsed.

Notes:

- a) *The Downloader operator can choose to use Secure Callback, even though the alarm system is programmed for Unattended Mode.*
- b) *Unattended mode does not comply with EN50131.*

Phone Book

(This option appears only when the i-sd02, i-dig02 or i-gsm02 module is fitted.)

Select *Downloading - Phone Book* to program two separate, 31-digit telephone numbers that the system will use during downloading. When the remote PC operator makes a connection they select one of these telephone numbers for the control unit to call back on (for example to the operator's home or office).

Press ▲ or ▼ keys to move the cursor backwards and forwards through the number if you wish to edit it.

Press ◀ to delete the digit to right of the cursor.

Press * to add a 2 second pause, if required. The display shows this as a comma.

IP Network

If you have fitted an Ethernet module (08750EUR-00) to the control unit then it is possible for Downloader to communicate with the control unit using the Internet Protocol. This menu allows you to store two IP addresses that the control unit can "call" in order to start a Downloading session. The user starts the call by selecting one of the IP address.

The options available are:

IP Address

This option presents two sub-menus where you can key primary and secondary IP Addresses used by Downloader. The IP address comprises four groups of digits. Each group is three digits long, and is separated from the next group by a "dot", for example "192.168.000.001". Press "*" to key in the dot.

IP Port Number

This option also presents another two sub-options where you can key in the port numbers that Downloader "listens" to on the remote PC for the primary and secondary IP addresses.

Secure Callback

(This option appears only when the i-sd02 or i-gsm02 module is fitted.)

Select *Downloading - Secure Callback* to allow Downloader to use a third callback number (independent of the telephone numbers in the *Downloading - Phone Book* option). Before making a Downloader connection, the remote PC operator keys in the third callback number. Once connected Downloader transmits the number to the control unit. The control unit then uses that number to call back to the remote PC.

Modem Baud Rate

(This option appears only when the i-sd02 or i-gsm02 module is fitted.)

Over some noisy telephone lines Downloader communicates more effectively using a slower Baud rate from the control unit. Select *Downloading - Modem Baud Rate* to change the baud rate to 300 baud.

Testing

The i-on40 provides three options within the Installer Menu to help in testing: the Test option itself, the View Log option to see what events have been recorded, and the About option so that you can check on the release level of the software.

Test

If you think that part of the system is not working correctly then you can use the Test option to test various peripherals.

The Test option also lets you check the identity of Remote controls, Panic Alarms and Tags.

To start testing, make sure the system is idle then:

1. Enter the Installer Menu and select Test.

The bottom line of the display shows the first entry of the Test menu.

2. Press ▲ or ▼ to scroll to the part of the system that you wish to test and press ► .
3. Select individual items to test by scrolling with the keys ▲ or ▼ and pressing ► to start and stop the test.

You can test each part listed in the Test menu as follows:

Sirens and Sounders

This option allows you to test all the warning devices connected to the control unit. Note that options for radio sirens will not appear if the control unit has not learned any radio sirens.

- | | |
|-------------------|--|
| Ext. Radio Sirens | This option presents a list of the learned-in radio sirens (up to four). Select a siren for testing by pressing ▲ or ▼. Press ► to turn the siren on. Press ► to turn the siren off again. The display shows the word "On" when the siren should be operating and "Off" when the siren |
|-------------------|--|

- should be silent. Note that both siren and strobe should operate.
- Wired Sirens This option allows you to operate all outputs programmed as "Siren" and "Strobe". Press ► to turn the outputs on. Press ► again to turn the outputs off.
- Loudspeakers With this option you can test any loudspeakers connected to the control unit. Press ► to generate an alarm tone from the loudspeakers. Press ► again to turn the loudspeakers off.
- Wired Keypads Use this option to test the sounders on the wired keypads. Press ► to generate an alarm tone from all keypads connected to the control unit. Press ► to turn the wired keypad sounders off again.

Wired Keypad

Use this menu option to test the keypad you are currently holding (you cannot test a keypad remotely). When you start the test all four LEDs should glow. The LEDs around the navigation should all glow red; every time you press a navigation key the LEDs change colour. Press all the keys one by one. The display should show you the key you pressed. Press **✕** to leave the test.

Walk test

When you select Walk Test, the display shows the first item in a list of all the detectors installed on the system. Walk around the site and trigger each detector. Every time you trigger a detector the control unit gives a double tone. The bottom right of the display shows an "A" if you trigger the Alarm input and a "T" if you trigger the Tamper.

The top of the display shows the number of zones left to test. The control unit decreases the number of zones every time you trigger an individual Alarm input.

The bottom line of the display shows the zone name. To see the zone number press **◀** or **▶**.

Press **✓** to end the test.

Zone Resistances

When you select Zone Resistance, the display shows the first of the available wired detectors. Press **▲** or **▼** to see the other detectors in the list. You can also key in the zone number to go directly to a zone.

The bottom line of the display shows the zone name. To see the zone number press **◀** or **▶**.

The end of the bottom line shows the resistance of the zone. The display alternates between the Alarm resistance ("A") and the Tamper resistance ("T").

"O/C" means Open Circuit.

"0k00" means zero resistance or closed circuit.

Signal Strengths

This option allows you check the received signal strength from all the radio transmitters belonging to the system.

The keypad display shows first: the strength of the most recent signal it has received from a transmitter, and second: (in brackets) the minimum strength signal it has received from the transmitter since the records were last reset. The control unit is always recording signal strengths, whether or not you are using the Signal Strength menu.

Note: If you have fitted a WAM to act as a repeater for weak detector signals then you will not see any change in the signal strength reported for those detectors. However, you should note the signal strength of the WAM, since that device is now passing on the information from the detectors whose signal you are trying to amplify.

To reset the signal strength records press "0" while you are in the *Tests – Signal Strength* menu. When you press "0" then the control unit resets the signal strength records for ALL transmitters.

There are four sections to the Signal Strength menu: *Detector Signals*, *Radio Sirens*, *Radio Keypads*, and *WAMs*. Press ▲ or ▼ followed by ► to select the section you want to test.

Detector Signals

The display shows the strength of the most recently received signal from each learned radio zone (zones 17 to 40). The bottom line of the display shows the zone name. To see the zone number press ◀ or ▶.

Radio Siren Signals

The display shows a list of the received signal strengths from each 760ES siren.

Radio Keypad Signals

The display shows a list of the received signal strengths from each radio keypad.

WAM Signals

The display shows a list of the received signal strengths from each learned WAM.

Outputs

This option has three sections: *Radio Outputs*, *Wired Outputs* and *Plug-by Outputs*. Press ▲ or ▼ followed by ► to select the section you want to test.

Within each section the bottom line of the display shows one from a list of outputs belonging to the section. Press ▲ or ▼ to display the output you wish to test then press ► to activate the output. Press ✓ to finish the test.

When you complete testing the outputs check that they are in the state you wish to leave them in.

Remotes

To test a remote control:

1. Select *Test – Remotes* from the Installer Menu.
The display instructs you to press any button on the remote.
2. Press one button on the remote.
The display identifies the remote and the button you pressed, shows the user that owns the remote, and reports the current signal strength.
3. Press all of the buttons on the remote in turn. Make sure the display reports each button correctly.
4. Press ✕ to end the test.

Panic Alarms

To test a panic alarm:

1. Select *Test – Panic Alarm* from the Installer Menu.
The display instructs you to press any button on the panic alarm.
2. Press one button on the panic alarm.
The display shows the user that owns the panic alarm, and reports current signal strength.

3. Press each button on the panic alarm in turn. Make sure the display reports each button correctly.
4. Press **X** to end the test.

Prox Tags

To test a proximity tag:

1. Select *Test – Prox Tags* from the Installer Menu.
The display instructs you to present the prox tag to the keypad.
2. Hold the prox tag up to the keypad.
The display identifies the prox tag and shows the user that owns it.
3. Press **X** to end the test.

ARC Reporting

To send a test call to an ARC number:

1. Select *Test – Comms Tests – ARC Reporting* from the Installer Menu.
The bottom line of the display shows "Send Test Call"
2. Press **▶** .
The bottom line of the display shows "Number 1".
There are two numbers to chose from.
3. Press **▶** until the bottom line shows the number you wish to call.
4. Press **▶** to start a test call.
The keypad display shows the progress of the call: "Dialling", then "Connected", "Negotiating" followed by "Call Successful". Check with the receiving centre that the test call arrived. If the call fails the display will show "Call failed" followed by a reason.

Speech Dialler

To send a test call to a speech dialler number:

1. Select *Test – Comms Tests – Speech Dialler* from the Installer Menu.
The top line of the display shows "Key in tel no:"

2. Key in the digits of the telephone number you wish to call.
3. Press ✓ to start the test call.

The keypad display shows the progress of the call: "Dialling" while the speech dialler is dialling the telephone number, followed by "Connecting" when the called number is ringing. The display shows "Connected" when the called number answers, followed by "Playing Messages" (after six seconds). If the called number presses 5 or 9 the display shows "Acknowledged".

Note: If you key in a valid user access code before the speech dialler connects to its first destination then the control unit will cancel the call.

PSU Current

This option allows you to see how much current the control unit is consuming.

View Log

The control unit keeps a log of the last 1,000 events (for example, alarms and setting/unsetting). You can read the log when the system is completely unset.

1. Select *View Log* from the Installer Menu.
The display shows you the most recent log event.
2. Press ▲ or ▼ to scroll through the log.
▼ shows earlier events.
▲ shows more recent events.
3. Press ► to see more details in the first line of the display.
4. Press ✕ when you have finished reading the Log.

Note: To comply with EN50131-1:2006 for Grade 2 systems the log is divided internally into two portions: mandatory events and non-mandatory events. The mandatory portion of the log can store up to 750 events, and the non-mandatory portion of the log can store up to

250 events. The entire log will store its records for at least 10 years without power.

When you view the log, the display initially shows users by their number (for example User01). Pressing ► displays any name programmed for the user.

There are some user numbers that have special meaning:

- User 00 Installer (the word "Web" will appear in the log entry if the installer logged on using the web browser).
- User 51 Quick Set User
- User 52 Panel (Control Unit)
- User 53 Keyswitch User
- User 54 ARC Remote Reset
- User 55 Downloader
- User 56 Virtual keypad

About

The *About* option in the Installer Menu offers information on the version and status of the control unit.

Panel

To see the current panel software version:

1. Select *About – Panel* from the Installer Menu.
The display shows the panel software version number.
2. Press ✕ to leave the Panel sub menu.

Comms

To see which communications module is currently installed:

1. Select *About – Comms* from the Installer Menu.
The bottom line of the display shows the communications module type (or the word "None" if no module is fitted).

If the communications module is an Ethernet or GPRS module:

2. Press ►.

The bottom line of the display shows "IP Link Status".

3. Press ►.

The bottom line of the display shows "OK" if the control unit has successfully connected to a PC by way of an Ethernet cable.

4. Press ◀ then ▼.

The bottom line of the display shows "IP Address".

5. Press ►.

The bottom line of the display shows the IP address currently assigned to the built-in Ethernet port. Note that this may have been assigned by DHCP.

6. Press ◀ then ▼.

The bottom line of the display shows "Subnet Mask".

7. Press ►.

The bottom line of the display shows the current subnet mask. Note that this may have been assigned by DHCP.

8. Press ◀ then ▼.

The bottom line of the display shows "Gateway Address".

9. Press ►.

The bottom line of the display shows the current gateway address. Note that this may be blank if you are connecting a PC/laptop directly to the control unit.

10. Press ◀ then ▼.

The bottom line of the display shows "MAC address".

11. Press ►.

The bottom line of the display shows the MAC address used by the built in Ethernet port.

12. Press **X** to leave the sub menu.

To see IP Network information for the built-in Ethernet port:

1. Select *About – Comms* from the Installer Menu.

The bottom line of the display shows the communications module type (or "None" if no module is fitted).

2. Press **▼**.

The bottom line of the display shows "Panel Ethernet".

3. Press **▶**.

The bottom line of the display shows "IP Link Status".

4. Press **▶**.

The bottom line of the display shows "OK" if the control unit has successfully connected to a PC by way of an Ethernet cable.

5. Press **◀** then **▼**.

The bottom line of the display shows "IP Address".

6. Press **▶**.

The bottom line of the display shows the IP address currently assigned to the built-in Ethernet port. Note that this may have been assigned by DHCP.

7. Press **◀** then **▼**.

The bottom line of the display shows "Subnet Mask".

8. Press **▶**.

The bottom line of the display shows the current subnet mask. Note that this may have been assigned by DHCP.

9. Press **◀** then **▼**.

The bottom line of the display shows "Gateway Address".

10. Press ► .

The bottom line of the display shows the current gateway address. Note that this may be blank if you are connecting a PC/laptop directly to the control unit.

11. Press ◀ then ▼ .

The bottom line of the display shows "MAC address".

12. Press ► .

The bottom line of the display shows the MAC address used by the built in Ethernet port.

13. Press ✕ to leave the sub menu.

Appendix I Installer Menu Defaults

Important: Where noted below the defaults listed enable the control unit to comply with EN50131 requirements. If you change these setting then the installation may no longer comply. If the control unit does not comply with EN50131 you must remove any labelling that indicates compliance.

DETECTORS/DEVICES

ZONES 1 - 40

Name: "Zone nn"
Type: Not used
Partitions: Partition 1

Attributes:

Chime: No
Soak Test: No
Double Knock: No
Part Set B: No
Part Set C: Yes
Part Set D: Yes
Part Set: No
Omittable: No
Force Set Omit: No

WIRED/RADIO KEYPADS

Name: "KP0n" or "RKP0n"
Partitions: Partition 1 - 4

Key A:

Name: "Key A"
Action: Partition 1 Full Set
OR Full Set

Key B:

Name: "Key B"
Action: Partition 2 Full Set
OR Part Set B

Key C:

Name: "Key C"
Action: Partition 3 Full Set
OR Part Set C

Key D:

Name: "Key D"
Action: Partition 4 Full Set
OR Part Set D

EXTERNAL SIREN 1 - 4:

Partition 01

INFO MODULES

Updates: Disabled
Rdy to set LEDs: Disabled

OUTPUTS

All outputs allocated to all partitions.

RADIO OUTPUTS 1 - 8

Name	Type	Polarity
Output 1-8	Not Used	Normal

WIRED OUTPUT 1 - 4

Name	Type	Polarity
Output 1	Siren	Normal
Output 2	Strobe	Normal
Output 3	Siren	Normal
Output 4	Strobe	Normal

PLUG BY OUTPUT 1 - 12

Name	Type	Polarity
Output 1	Fire	Normal
Output 2	Panic Alarm	Normal
Output 3	Burglar Alarm	Normal
Output 4	Open / Close	Inverted
Output 5	Omit (System)	Normal
Output 6	Alarm Abort	Normal
Output 7	Confirmed	Normal
Output 8	Technical	Normal
Output 9	Panel AC Fail	Normal
Output 10	Panel Batt Fault	Normal
Output 11	General Fault	Normal
Output 12	Tamper	Normal

PART SETTING OPTIONS

FULL SET

Name: "Full Set"

Exit Mode: Timed Set

PART SET B, C AND D

Exit Mode: Instant Set

Alarm Response: Internal+Siren

Part Set Final Exit: Final exit

Part Set Entry Route: Entry Route

PART SET B NAME:

"Part Set B"

PART SET C NAME:

"Part Set C"

PART SET D NAME:

"Part Set D"

EXIT TIME:

40s

(See Note 2)

ENTRY TIME:

45s

Note: The maximum time permitted by EN50131-1 Clause 8.3 is 45 seconds.

STROBE ON SET:

Disabled

(See Note 2)

STROBE ON UNSET:

Disabled

PARTITIONS 01 - 02

Name: "Partition 1"

Exit Mode: Timed Set

Exit Time: 45

Entry Time: 45

Note: The maximum time permitted by EN50131-1 Clause 8.3 is 45 seconds.

Alarm Response: Siren + Comms

Part Set Exit Mode: Instant Set

Part Set Alarm Response: Siren +
Comms
(See Note 2)
Part Set Final Exit: Final exit
Part Set Entry Route: Entry Route
Strobe on Set: On
Strobe on Unset: On

FULL SET LINK

Partitions 2-4: No

SYSTEM OPTIONS**WIRED ZONE TYPE:**

2 Wire FSL 2k2/4k7 (To comply with EN50131 select this option manually during initial power up.)

USER ACCESS:

PA keys active: No
Quick Set: No
(See Note 2)
Quick Omit: No
User code req: Yes

USER RESET

Zone Alarms: Yes (Note: This option does not appear if DD243 Confirmation is ON)

Zone Tamper: Yes (See Note 4.)
System Tamper: Yes

DD243 CONFIGURATION:

Confirmation: On (See Note 1, and Note on page 51)

Confirmation Time: 30 mins

After Entry: 2 zones

Entry Keypad Lock: Off

Sounder: Unconfirmed

Siren on: Unconfirmed

Unconfirmed Reset: User

Confirmed Reset: User

INSTALLER NAME

Installer

INSTALLER CODE:

7890

KEYPAD TEXT:

i-on40

REMOTE NEEDS ENTRY:

Disabled

PA RESPONSE:

Audible

AUTO REARM:

Never

Note: This setting is required in order to comply with EN50131.

SIREN DELAY:

0 min

SIREN TIME:

15 minutes

To comply with EN50131-1 Clause 8.6 minimum is 90s, maximum is 15mins.

ENTRY ALARM DELAY:

Enabled

Note: This setting is required in order to comply with EN50131 8.3.8.2.

SUPERVISION:

On

JAMMING:

On

FORCE SET:

Off

TAMPER OMIT:

Disabled

(See Note 2)

CSID CODE

0000

SILENCE ALERTS:

User Code

MAINS FAIL DELAY:

0 minutes (see Note 2)

COMMUNICATIONS**ARC REPORTING:**

Note: to comply with EN50131 you must fit a communicator module.

Call Mode: Enabled

(See Note 2)

Phone book: empty

Account Number: 000000

Report Type: Fast Format

Fast Format channels:

Output 1: Fire

Output 2: Panic alarm

Output 3: Burglar

Output 4: Open / Close

Output 5: Omit (System)

Output 6: Alarm Abort

Output 7: Alarm conf

Output 8: Technical Alarm

CID/SIA Events:

Fire: Yes

Panic: Yes

Burg: Yes

Technical Alarm: No

Tamper: Yes

Set/Unset: Yes

(See Note 2)

Part Set: Yes

(See Note 2)

Reset: Yes

(See Note 2)

Exit timeout: Yes

Omit: Yes

RF Supervision: Yes

RF Jamming: Yes

(See Note 2)

RF Battery/PSU: Yes

(See Note 2)

Panel Battery: Yes

(See Note 2)

Mains Fail: Yes

(See Note 2)

Faults: Yes

(See Note 2)

Installer Mode: Yes

(See Note 2)

User Code Changed: No

Date/Time Reset: No

Downloading: No

Restorals:

Enabled

Send tamper as burg:

Disabled

Dynamic Test Call:

Enabled

Static Test Call:

Disabled

(See Note 3)

Burg Comms Rearm:

Disabled

21CN FF Ack Time:

800ms

Static Test Call:

Disabled

SPEECH DIALLER:

Call mode: Disabled

Speech Messages: None

Speech Phone book: Empty

Triggers: None

Destinations: None

Call Acknowledged: Enabled

SMS:

Call Mode: Disabled

Messages: Blank

Phone Book: Empty

Triggers: None

LINE FAIL RESPONSE:

Silent

LINE FAIL DELAY:

9s (see Note 2)

IP NETWORK (OWN):

Web Server Status: Disabled

Web Server Port Number: 80

IP Address: 192.168.0.100

IP Sub-net mask: 255.255.255.0

Gateway IP address: Blank (this option appears only if Ethernet module fitted)

DOWNLOADING

Account

Name: Blank

Serial Number: Blank

Rings to Answer:

5

Answer on 1 Ring:

Disabled

Access Mode:

Call Out Only (see Note 2)

Phone Book:

Blank

IP Network:

IP Address 1: Blank

IP Port 1: Blank

IP Address 2: Blank

IP Port 2: Blank

Secure Callback:

Disabled

Modem Baud Rate:

Auto

*Note: 1. DD243 is a UK requirement. If this option is disabled in non-UK countries then the control unit will still comply with EN51031.
2. This setting is required in order to comply with EN50131.
3. To comply with EN50131, either Static or Dynamic test calls must be enabled. This is available only when an i-sd02 is fitted and ARC Communications enabled.
4. For INCERT approval set to NO.*

Appendix II: ARC Communication Formats

Note: To comply with EN50131 you must fit a communications module.

Fast Format

Fast Format is the format most widely used in the UK. When using the Fast Format, each message transmitted to the ARC consists of the following:

- A 4,5 or 6-digit account number.
- 8 channels of data. Each channel communicates the status of an output, as programmed using the "Fast Format Channels" option (see page 63). The value of the channel can be:
 - 1 = new alarm and not previously reported
 - 2 = status of output is open/unset
 - 3 = alarm restored and not previously reported
 - 4 = status of output is closed/set
 - 5 = not in alarm
 - 6 = in alarm but previously reported

A test signal.

Contact ID

The Contact ID format transmits data from the event log to the Alarm Receiving Centre (ARC). Examples of messages in the Contact ID format are:

Example 1 - 1234 18 1137 01 015 2

- 1234 is the account number, as specified in Account Numbers option (page 63).
- 18 is the message type used to identify the message as Contact ID.
- 1137 is the event qualifier for a new event (1), followed by the event code for a system tamper alarm (137).
- 01 is the partition number.
- 015 is the zone number.

2 is the checksum value, which the ARC needs to verify to confirm a valid message has been received.

Example 2 - 1234 18 3137 01 015 F

The only difference between this and the first example, is the event qualifier of 3 to indicate a restore of a system tamper alarm, and the checksum value.

SIA 1, SIA 2, SIA 3 and Extended SIA 3

When using the SIA formats the control unit transmits data from the event log to the ARC. The four SIA formats differ in the amount of data transmitted with each message:

Type	Format
SIA1:	#AAAAAA NCCcc
SIA2:	#AAAAAA Nidnnn/rinn/CCcc
SIA3:	#AAAAAA Ntihh:mm/idnnn/rinn/CCcc #AAAAAA AS
Extended SIA 3:	#AAAAAA Ntihh:mm/idnnn/rinn/CCcc/AS

Where:

AAAAAA	6-digit programmable account code (e.g. 123456).
"N"	New Event (always N).
"ti"hh:mm/	time (e.g. ti10:23/).
"id"nnn/	user number, if applicable; otherwise not sent (e.g. id123/ or id6/).
"ri"nn/	partition no. (e.g. ri12/ or ri3).
CC	event code (e.g. FA = Fire Alarm).
cc	zone or keypad number, if applicable; otherwise not sent (e.g. 23 or 5).
"A"S	text description of event, usually the log event description.

(The control unit sends those characters shown between " and " above literally as they appear in the text.)

For example, if there is a fire alarm on zone 2 of partition 4 at 10:15 (partition 4 account number is 10), the message would be:

SIA1:	#000010 NFA2
SIA2:	#000010 N/ri4/FA2
SIA3:	#000010 Nti10:15/ri4/FA2 #000010 AFire Zone 2
Extended SIA3:	#000010 Nti10:15/ri4/FA2/AFire Zone 2

Appendix III: Programming a Common Area

Some commercial premises include two or more separate areas linked by a common area. You can program the i-on40 to allow users to set each area independently, and then set the common area automatically when the last occupant leaves the premises. The Full Set Link option in Installer Menu - Partitions provides this feature.

Figure 4 shows a typical example of a commercial building that could use the "Common Area".

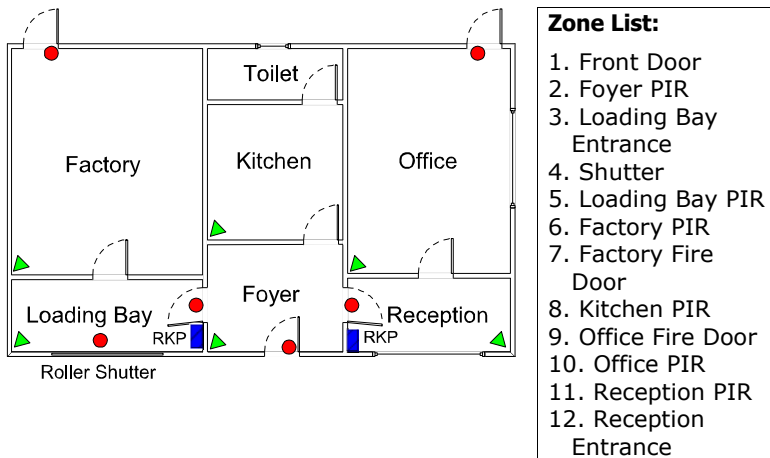


Figure 4. Typical commercial building.

The business using the building is split into Factory and Office departments. These two sets of users work different hours. The manager wants each department to be able to set their own part of the alarm system separately. The common area including the Foyer, Kitchen and Toilet should only be armed when there is no one in the building. This will allow either the Factory or the Office staff to use those facilities when part of the alarm system is armed.

Installation and Programming

If the installer wishes to employ wired zones only they should use FSL wiring. The i-on40 provides connections for 16 FSL zones on its pcb.

For best operation, there should be two keypads: one fitted in the Loading Bay and the other fitted in Reception.

When starting the control unit for the first time, select Partitioned system (not part setting system).

To make the system easier to use it is advisable to enable the ABCD LED's on the keypads. However the installer must make sure that this does not break the EN50131 requirement that no indication of the status of the system should be visible if the keypad is in a public area.

In the i-on40 Partition 1 is always the common area. Use Partition 1 for the Foyer, Kitchen and Toilet. Partition 2 can be used for the Factory and Loading Bay. Partition 3 can be used for the Office and Reception. To make the common area (P1) follow the status of other partitions use the Partitions - Full Set Link option (see below).

To avoid false alarms make the alarm response of the common area (Partition 1) Siren + Comms and the other two Partitions Siren only.

Zone Programming

Location	Zone	Name	Zone Type	Partitions
Front Door	01	Front Door	Final Exit	P1
Foyer PIR	02	Foyer PIR	Entry Route	P1
Loading Bay Entrance	03	LB to Foyer	Final Exit	P2
Roller shutter	04	Rshutter	Normal Alarm	P2
Loading Bay PIR	05	LBay PIR	Entry Route	P2
Factory PIR	06	Factory PIR	Normal Alarm	P2
Factory Fire Door	07	Factory FD	24 Hour	P2
Kitchen PIR	08	Kitchen PIR	Normal Alarm	P1
Office Fire Door	09	Office FD	24 Hour	P3
Office PIR	10	Office PIR	Normal Alarm	P3
Reception PIR	11	Recept PIR	Entry Route	P3
Reception Entrance	12	Recept Door	Final Exit	P3

Partition and Other Programming

Menu	Sub Menu	Option
Add/delete	Detectors/Devices	External Radio Siren (if to be fitted)
Wired keypads	Keypad 01	Name = Office Partition 3
	Keypad 2	Name = Factory Partition 2
	Keypads 3 & 4 – not fitted	NA
Outputs	Panel Outputs	1 = Siren 2 = Strobe 3 & 4 = NU
Partitions	P1	Name = Foyer Exit Mode = Final Door Set Settle Time = 10s Entry Time = 45s Alarm Response = Siren + Comms (Full) Strobe on Set = Yes (If required) Strobe on Unset = Yes (if required)
	P2	Name = Offices Exit Mode = Timed Exit Time = 20s Entry Time = 45s Alarm Response = Siren (Local)
	P3	Name = Factory Exit Mode = Timed Exit Time = 20s Entry Time = 45s Alarm Response = Siren (Local)
	Full Set Link	P2 = Yes P3 = Yes
	System Options	Wired Zone Type
	DD243 (for UK only)	Confirmation = On
	• <i>Confirmation Time</i>	30 mins
	• <i>After Entry</i>	2 zones
	• <i>Entry keypad Lock</i>	On
	• <i>Sounder on</i>	Unconfirmed
	• <i>Siren on</i>	Unconfirmed
	• <i>Unconfirmed reset</i>	User
	• <i>Confirmed Reset</i>	Installer
	Keypad Text	Enter Name of installer company
	Siren Delay	(default 0 mins)
	Siren Time	(default 15 mins)
	Force Set	Off
	CSID	Enter 4 digit ARC Scantronic reset code (if required)
	Silence Alerts	User

User Programming

User	Code	Type	Partitions
01	1234	Master User	Whole system – P2 + P3
02	2222	Partition user	P2 (Factory)
03	3333	Partition user	P3 (Office)

User Operation

To set:

Full System	User 01 enters code or Prox + ✓ (User 01 can select an individual Partition or full set the whole system.)
Factory only (Partition 2)	Partition 2 User enter Code or Prox in Keypad 2
Office only (Partition 3)	Partition 3 User enter Code or Prox in Keypad 1

To Unset:

First user to enter keys in their code or presents a Prox tag

If User 02 (a member of the Factory department) sets their Factory partition and the Office partition is already set, then the common foyer area will also start to set. When the user closes the Front Door (zone 1) the whole system sets and the alarm response is raised to Full alarm (Siren + Comms).

The same thing will happen if User 03 sets the Office partition when the Factory partition is already set.

If either User 02 or 03 opens the Front Door this starts the entry time and tone. The user enters their code or presents a Prox tag to the keypad in their department. The system then unsets their partition and the common area.

If the Master user opens the Front Door and enters their code or presents a Prox to a keypad then only P1, the common area, will unset. The keypad then gives the master user the option to unset either Factory or Office or both. This allows the manager to open only the area they want to enter, leaving the other area protected.

Index

24 hour alarm	
output type.....	41
zone type	12
762r	29
768r	29
769r	29
770r	27
771r	25
AC Fail	
external PSU zone type	14
fast format	64
output type.....	36
Access code	
defaults.....	3
installer.....	54
restore.....	5
user.....	3
Account name	
Downloader	79
Account number	
ARC reporting	63
Alarm abort	
output type.....	35
Alert	
tones silencing	59
Alternative reporting	62
Answer on one ring.....	80
ARC reporting	60, 61
account number	63
call mode	61
IP address	63
IP network.....	62
phone book.....	62
report type	63
Armed lamp.....	40
Assign comms channels.....	64
ATS Test	
output type.....	39
Auto rearm.....	55
Battery	
fault output type.....	37
Bell	39
delay	55
run time.....	56
Burg comms rearm	67
Burglar alarm	
fast format	64
output type.....	34
Call acknowledge.....	73
Call out only	81
Chime.....	16
Closed circuit loop	8
Common Area	101
Comms channels	
fast format	64
Comms module	61
removing.....	61
speech dialler.....	68
Communication	
SIA.....	99
Communications.....	2
menu.....	60
module	2
Confirmation.....	51
After entry.....	51
Timer.....	51
Confirmed alarm	
output type.....	35
Confirmed reset	52
Contact ID.....	63
account code	63
codes.....	65
report groups.....	65
reports.....	65
restorals.....	66
DD243	51
Default	
access codes.....	5
country	53
factory	53
factory settings	6
restoring	53
Detectors	
deleting.....	9
editing	10
learning	8
signal strengths.....	87
Double knock.....	17
Downloading.....	61, 79
access mode	80
connection type.....	79
IP address	82
mode baud rate.....	83
telephone number	82
Dynamic test call.....	68
Entry code lockout.....	52
Entry route.....	12
in part set (Part setting)	47
in part set (partitions)	47
stray on entry delay.....	56
Entry time	
for remote control.....	54
Part setting.....	46
Entry/exit follow.....	40
Event log	
Contact ID transm. format	98
SIA transmission format	99
Exit mode	
Part setting.....	45

Exit time	
Part setting.....	46
External PSU	
AC Fail zone type.....	14
battery fault zone type.....	14
fault output type.....	38
fault zone type.....	15
low volts output type.....	37
Low volts zone type.....	15
Factory settings.....	6
Fast format.....	64
account code.....	63
Final door	
in part set (partitions).....	47
Final door set	
Part setting.....	45
Final exit.....	12
in part set (partitions).....	48
Final Exit	
settling time.....	46
Fire	
fast format.....	64
output type.....	34
SIA messages.....	100
zone type.....	12
Force set.....	57
Force set omit.....	18
Full set	
exit mode (Part setting).....	45
name (Part setting).....	44
output type.....	41
Full Set Link.....	48, 101
Full set ready.....	41
Fully supervised loop.....	8
Gateway address	
Ethernet module.....	78
web server.....	77
General fault	
output type.....	38
GPRS	
password (ARC reporting).....	78
user id (ARC reporting).....	78
Info module.....	25
adding.....	25
disabling.....	26
ready to set led.....	26
Infra red learn.....	29
Installer code	
changing.....	54
lost code.....	5
Installer text.....	54
Instant set	
Part setting.....	45
IP address	
downloading.....	82
Ethernet module.....	78
GPRS module.....	78
polling (for arc).....	63
web server.....	77
IP Network.....	60
ARC reporting.....	62
downloading.....	82
Key switch	
latched.....	13
momentary.....	13
Keypad	
naming.....	18
PA keys enable.....	49
partitions.....	19
quick set keys.....	19
radio.....	21
radio-deleting.....	22
radio-learning.....	21
radio-naming.....	22
radio-partitions.....	22
testing.....	86
Language.....	53
Line Fail.....	See Line Fault
Line Fault	
audible displayed alarm.....	76
reporting.....	60, 75
silent.....	76
tamper.....	76
Log	
erasing.....	6
viewing.....	90
MAC address	
viewing.....	92, 94
Mains power supply	
Mains fail - fast format.....	64
Modem baud rate.....	83
Module.....	91
Name	
account.....	79
editing.....	7
erasing all.....	53
full set (Part setting).....	44
installer text.....	54
IP network unit.....	63
keying in.....	7
plug-by outputs.....	33
profile.....	53
radio keypad.....	22
radio output.....	30
telephone number.....	71, 75
wired keypad.....	18
wired output.....	32
zones.....	11
Normal alarm.....	12
in part set (partitions).....	47
Omit allowed attribute.....	17
Open/Close.....	35
fast format.....	64

Output	
Digi On Board output.....	98
Outputs	
plug-by	33
radio.....	29
Radio-learning.....	29
radio-name	30
radio-partitions	31
radio-type	31
testing	88
type.....	34
wired	31
wired-partitions	32
Wired-polarity	33
wired-type.....	32
PA keys enable.....	49
PA silent.....	54
Panic alarm	
fast format	64
output type.....	34
testing	88
zone type	11
Part set	
B options (part setting)	44
B output type.....	41
B zone attribute.....	17
C output type.....	41
C zone attribute	17
D output type.....	42
D zone attribute	17
definition	2
entry route as (part setting)....	47
final exit as (part setting)	47
output type.....	41
zone attribute for partitions.....	17
Part setting.....	43
definition	2
part set B options	44
Partitioned system.....	43
Partitions	
definition	2
info module	25
keypad.....	19
siren	24
zones.....	15
Phone book	
ARC reporting	62
downloading	82
SMS.....	75
speech dialler.....	71
PIR set latch	40
Plug-by outputs.....	33
Polarity	
wired output	33
Polling IP address.....	63
Profile.....	53
Proximity tag	
for entry code lockout	52
testing	89
Quick set keys	
enable	49
naming	20
programming	19
Radio keypad.....	21
deleting.....	22
learning	21
naming	22
partitions.....	22
Radio outputs	29
learning	29
naming	30
partitions.....	31
type.....	31
Radio zone	
adding	8
delete all	9
delete one	9
Ready to set LED.....	26
Remote controls	
for outputs	43
force set.....	57
needs entry timer	54
testing	84, 88
Report mode	
fast format	64
Reset	
user codes.....	5
Restorals.....	66
RF fault.....	35
RF jamming.....	35
enabling/disabling detection of	57
fast format	64
RF low battery	
fast format	64
output type.....	35
RF supervision	
enabling/disabling	56
fast format	64
output type.....	35
Rings to answer	80, 82, 83
SD02.....	68
Secure callback	81
Send tamper as burg	67
Set fail.....	42
Setting complete	41
Setting time for Final Exit	46
Shock sensor reset	40
SIA	63, 99
Signal strength	
testing	87

Silent PA 54

Silent set

- Part setting..... 45

Single reporting 61

Siren 39

- confirmed/unconfirmed 52
- delay 55
- deleting 24
- partitions 24
- radio..... 23
- run time..... 56
- testing 84

Smoke sensor reset 41

SMS 60, 63, 73

- messages 74
- telephone numbers 75
- triggers 75

Soak Test..... 16

Software version 91

Sounder

- confirmed/unconfirmed 52

Speech dialler 60, 68

- testing 89

Speech messages

- recording..... 70
- triggers..... 72

Static test call..... 68

Stray on entry delay 56

Strobe 39

Strobe on set

- Part setting..... 46

Strobe on unset

- Part setting..... 46

Subnet mask

- Ethernet module..... 78
- web server 77

System options 48

Tamper

- allow omit 58
- fast format 64
- output type..... 38
- send as burg..... 67
- zone type 14

Technical alarm

- fast format 64
- output type..... 35
- zone type 12

Telephone number

- ARC reporting 62
- downloading 82
- SMS 75
- Speech dialler 71

Test call

- dynamic..... 68
- static 68

Testing 84

Text editing 7

Text messages..... 73

Timed set

- Part setting..... 45

Unattended mode..... 81

Unconfirmed reset..... 52

Unset complete..... 41

USB 79

User access 49

User code

- default 5
- required for engineer access ... 50
- reset 5

User defined

- output type 43

Walk test 86

WAM 27

- adding 27
- deleting 29
- viewing 28

Web server..... 60

Wired outputs 31

- partitions 32
- polarity 33
- type 32

Wired zone type..... 48

Zone

- alarm output type..... 42
- attributes 16
- editing 10
- follow output type 42
- force set 57
- names 11
- number of 49
- numbering..... 8
- omit (system) output type 38
- omit (user) output type..... 38
- omitted-fast format 64
- partitions 15
- resistances 86
- types 11
- wiring not used 10

i-on40

This page is intentionally
blank.

This page is intentionally
blank.

i-on40

This page is intentionally
blank.

www.coopersecurity.co.uk
Product Support (UK) Tel: +44 (0)
1594 541979
Available between:
08:15 to 12:30 and 13:00 to 17:00
Monday to Friday.
Product Support Fax: (01594)
545401
Part Number 12003625